

HEI FRAMING & ELECTRICAL HOISTWAY SPECIFICATIONS

PROJECT: _____

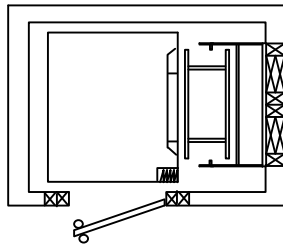
DATE: _____

THIS HOME IS RECEIVING AN ELEVATOR WHICH WILL REQUIRE STRUCTURAL SUPPORT FOR THE ELEVATOR GUIDE RAIL SYSTEM AND LOADS BUILT INTO THE FRAMING OF THIS ELEVATOR SHAFT. ATTACHED ARE DETAILED DRAWINGS SHOWING THE LAYOUT AND MATERIAL NEEDED TO SUPPORT THIS LOAD.

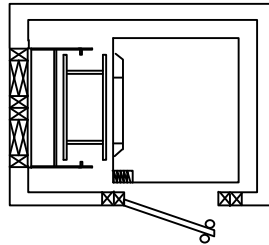
GENERAL CONTRACTORS AND FRAMERS:

FOR COMPLETE HOISTWAY LAYOUT AND STRUCTURE TO ACCOMMODATE ELEVATOR INSTALLATION, REFER TO THE ATTACHED DRAWINGS.

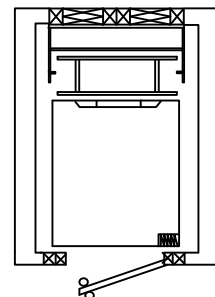
FOR THIS PROJECT THE RAIL SUPPORT WALL IS LOCATED ON THE:



RIGHT HAND WALL



LEFT HAND WALL



REAR WALL



(ALWAYS ORIENT THE RAIL WALL FROM THE LOWEST LEVEL SERVED BY ELEVATOR)

I HAVE POSTED THIS DOCUMENT TO THE WALL THAT REQUIRES THE STRUCTURAL SUPPORT

IF YOU HAVE ANY QUESTIONS OR CONCERNS YOU CAN CONTACT ME _____ AT _____

HYBRID ELEVATOR INC. #16 – 364 Loughheed Road Kelowna, BC V1X 7R8 Phone: (778) 484-0064 Fax: (778) 484-0086 www.hybridelevator.ca	HOISTWAY SPECIFICATIONS	
	REV. #	1
DATE: Nov. 9 / 2012	DRAWN by DAE	

CONFIDENTIAL PROPRIETARY
 THIS DOCUMENT CONTAINS INFORMATION
 PROPRIETARY TO HYBRID ELEVATOR INC. USE OR
 DISCLOSURE WITHOUT WRITTEN CONSENT OF
 HYBRID ELEVATOR IS EXPRESSLY FORBIDDEN
 © 2012 HYBRID ELEVATOR INC.

HW-DWG # 01

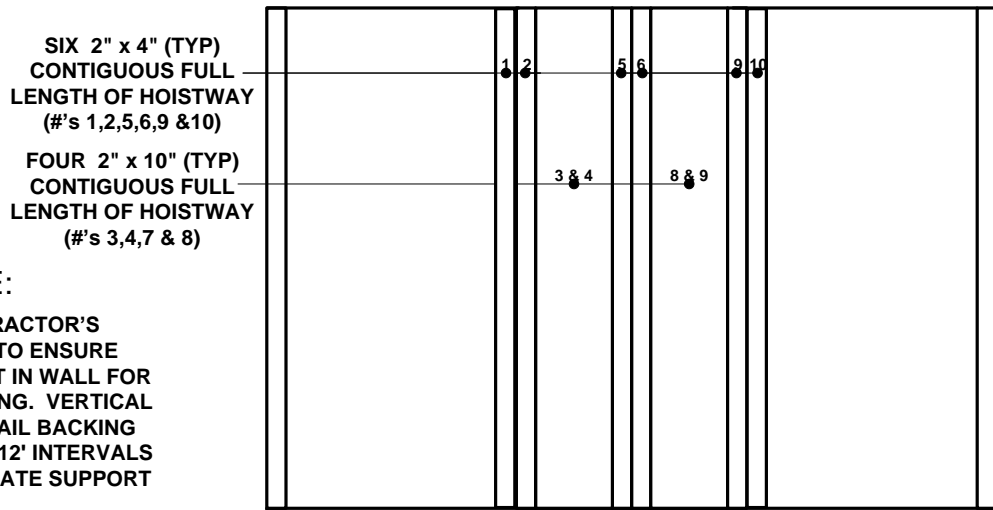
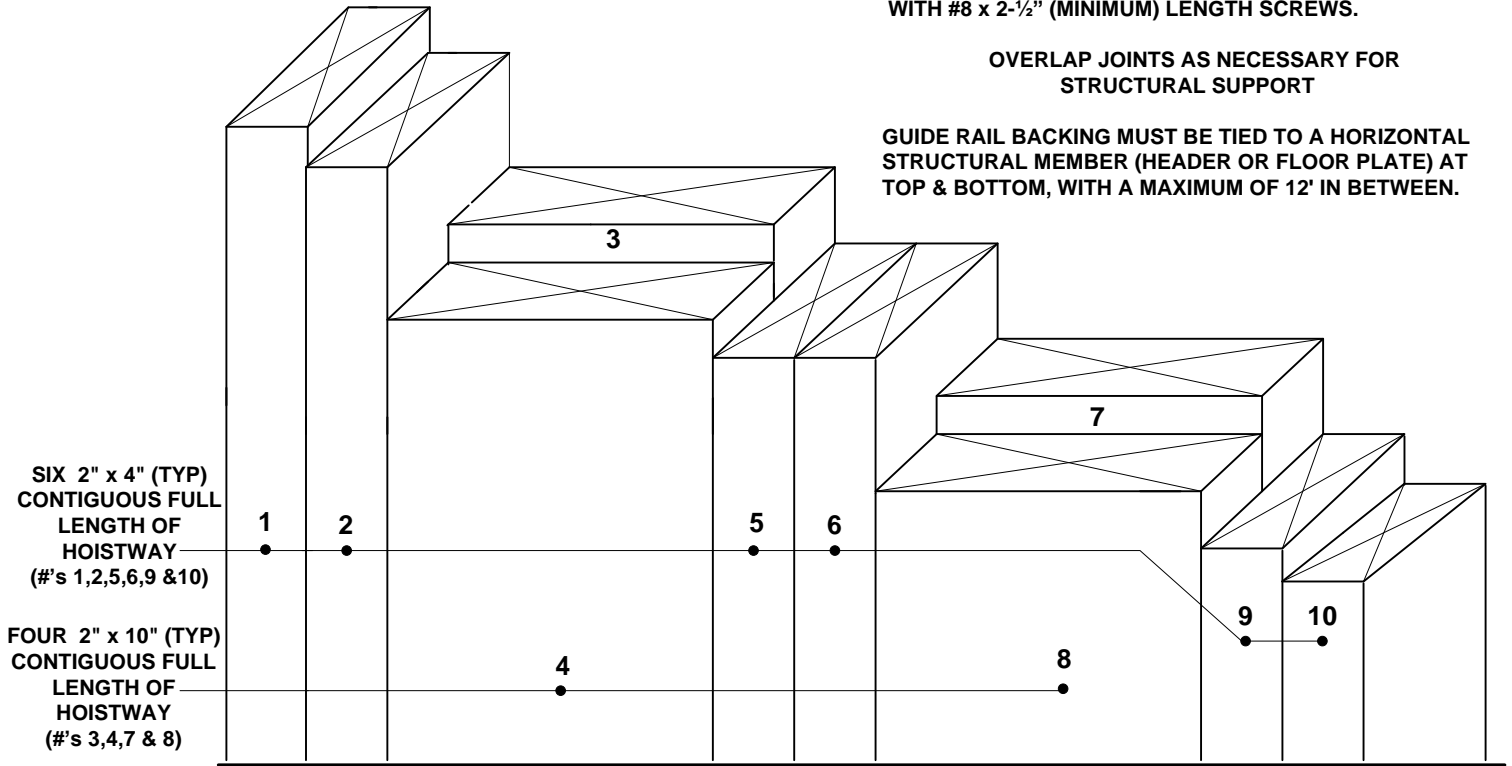
GUIDE RAIL BACKING DETAILS

NOTE:

LAMINATE 2" x 10"s & 2" x 4"s WITH GLUE AND FASTEN WITH #8 x 2-1/2" (MINIMUM) LENGTH SCREWS.

OVERLAP JOINTS AS NECESSARY FOR STRUCTURAL SUPPORT

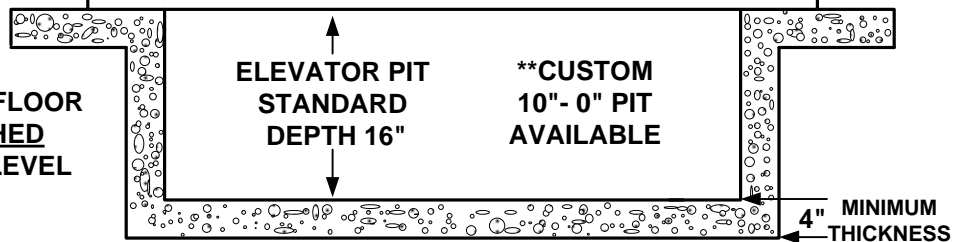
GUIDE RAIL BACKING MUST BE TIED TO A HORIZONTAL STRUCTURAL MEMBER (HEADER OR FLOOR PLATE) AT TOP & BOTTOM, WITH A MAXIMUM OF 12' IN BETWEEN.



NOTE:

IT IS THE CONTRACTOR'S RESPONSIBILITY TO ENSURE ADEQUATE SUPPORT IN WALL FOR GUIDE RAIL FASTENING. VERTICAL SPANS OF GUIDE RAIL BACKING SHALL NOT EXCEED 12' INTERVALS WITHOUT INTERMEDIATE SUPPORT

CONCRETE PIT FLOOR TO BE FINISHED SMOOTH AND LEVEL



STEEL REINFORCED CONCRETE SLAB
5" BY 5" GRID MIN. 10 MM REBAR
TO WITHSTAND AN IMPACT LOAD OF 5000 LB

CONFIDENTIAL PROPRIETARY
THIS DOCUMENT CONTAINS INFORMATION PROPRIETARY TO HYBRID ELEVATOR INC. USE OR DISCLOSURE WITHOUT WRITTEN CONSENT OF HYBRID ELEVATOR IS EXPRESSLY FORBIDDEN

© 2012 HYBRID ELEVATOR INC.

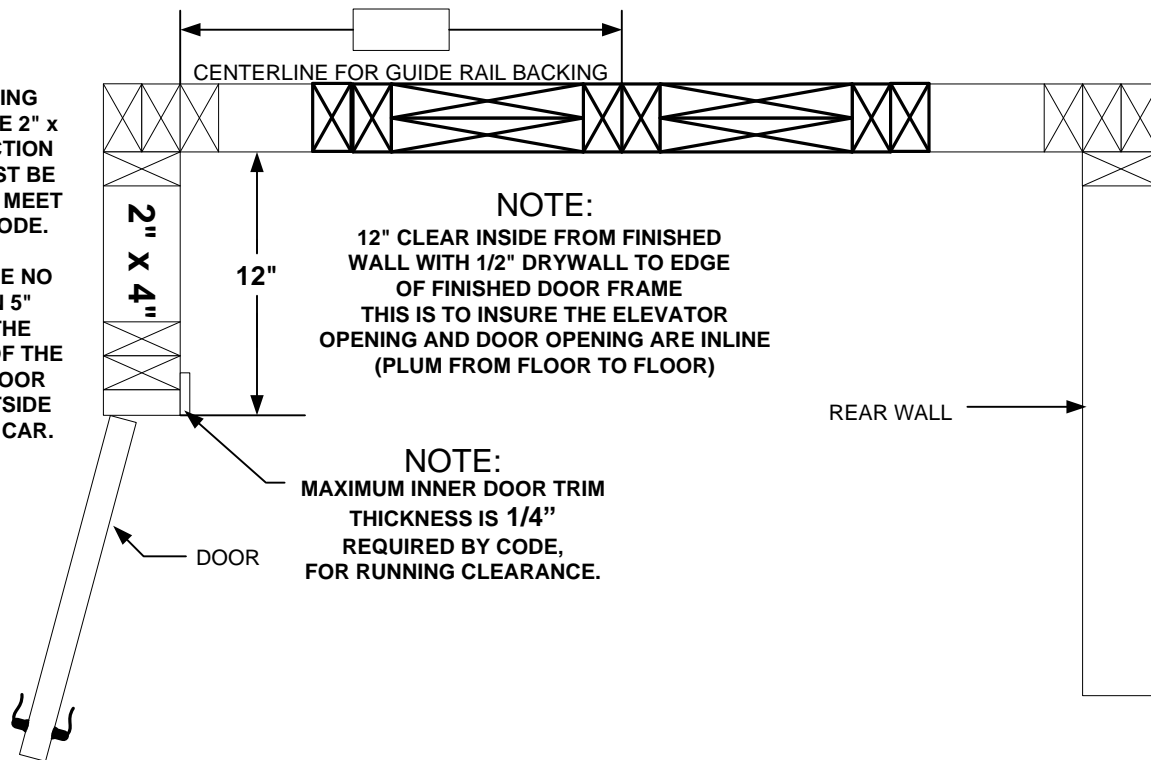
HW-DWG # 02

<p>HYBRID ELEVATOR INC.</p> <p>#16 - 364 Lougheed Road Kelowna, BC V1X 7R8 Phone: (778) 484-0064 Fax: (778) 484-0086 www.hybridelevator.ca</p>	<p>GUIDE RAIL BACKING DETAILS AND PIT DETAILS</p>	
	<p>REV. # 1</p>	<p>DWG: NTS</p>
<p>DATE: Nov. 9 / 2012</p>	<p>DRAWN by DAE</p>	

LEFT HAND DRIVE WALL

NOTE:
DOOR OPENING WALL MUST BE 2" x 4" CONSTRUCTION OR DOOR MUST BE RECESSED TO MEET ELEVATOR CODE.

THERE CAN BE NO MORE THAN 5" BETWEEN THE INSIDE FACE OF THE HOISTWAY DOOR AND THE OUTSIDE FACE OF THE CAR.



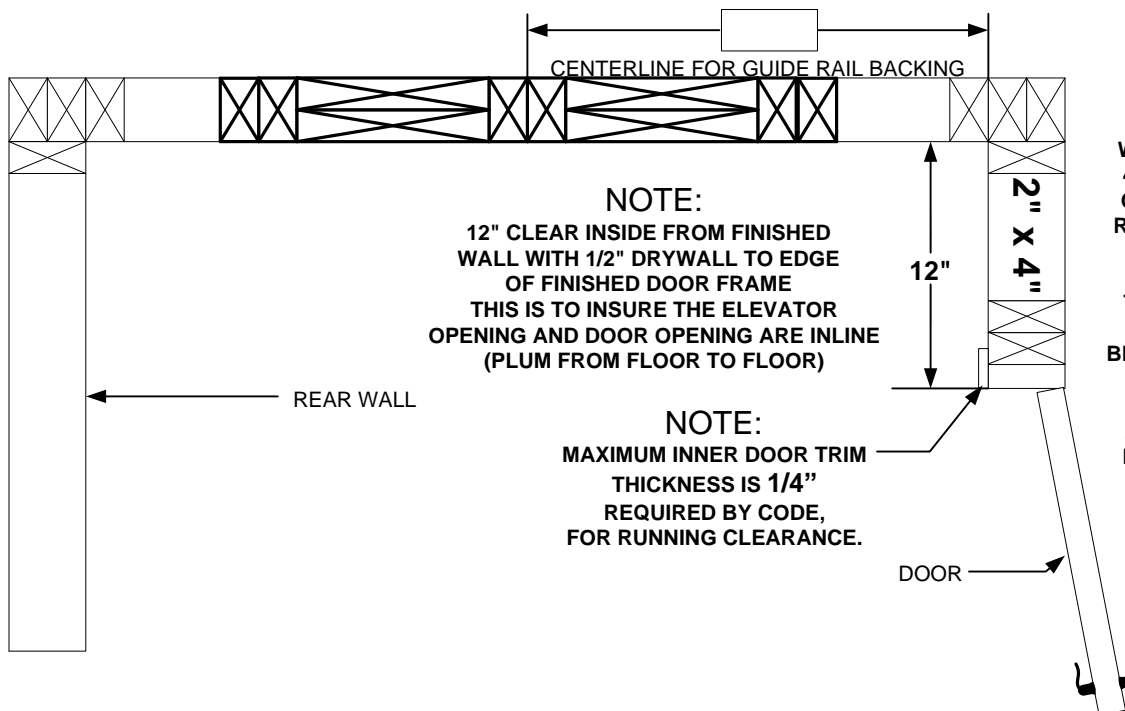
NOTE:
12" CLEAR INSIDE FROM FINISHED WALL WITH 1/2" DRYWALL TO EDGE OF FINISHED DOOR FRAME
THIS IS TO INSURE THE ELEVATOR OPENING AND DOOR OPENING ARE INLINE (PLUM FROM FLOOR TO FLOOR)

NOTE:
MAXIMUM INNER DOOR TRIM THICKNESS IS 1/4" REQUIRED BY CODE, FOR RUNNING CLEARANCE.

RIGHT HAND DRIVE WALL

NOTE:
DOOR OPENING WALL MUST BE 2" x 4" CONSTRUCTION OR DOOR MUST BE RECESSED TO MEET ELEVATOR CODE.

THERE CAN BE NO MORE THAN 5" BETWEEN THE INSIDE FACE OF THE HOISTWAY DOOR AND THE OUTSIDE FACE OF THE CAR.



NOTE:
12" CLEAR INSIDE FROM FINISHED WALL WITH 1/2" DRYWALL TO EDGE OF FINISHED DOOR FRAME
THIS IS TO INSURE THE ELEVATOR OPENING AND DOOR OPENING ARE INLINE (PLUM FROM FLOOR TO FLOOR)

NOTE:
MAXIMUM INNER DOOR TRIM THICKNESS IS 1/4" REQUIRED BY CODE, FOR RUNNING CLEARANCE.

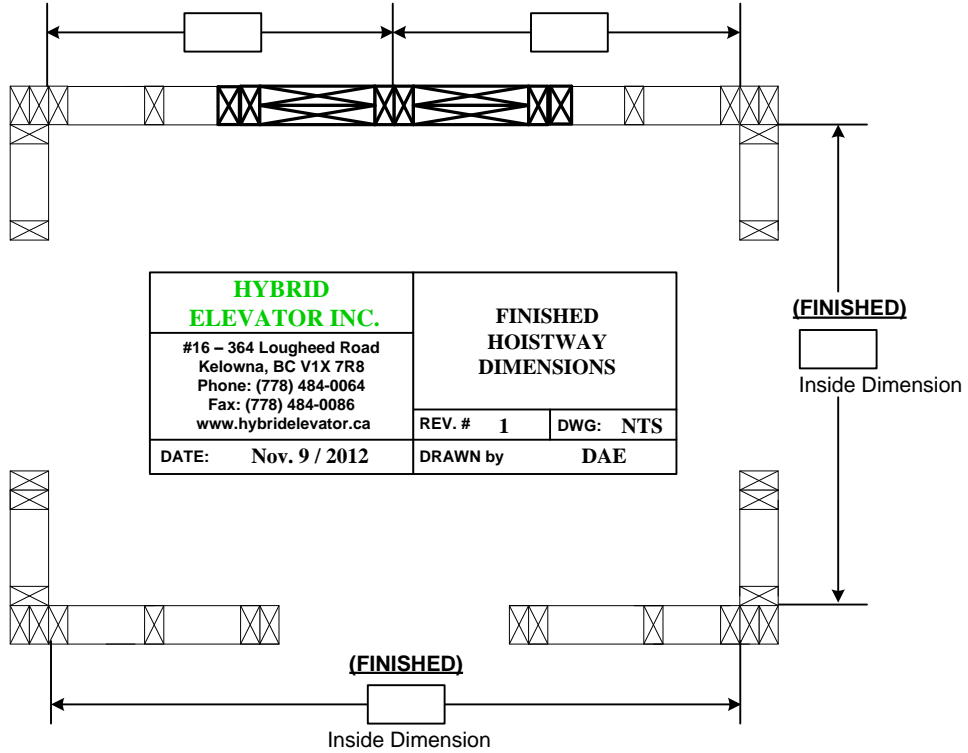
HYBRID ELEVATOR INC.		LEFT & RIGHT DRIVE WALL DETAILS	
#16 - 364 Loughheed Road Kelowna, BC V1X 7R8 Phone: (778) 484-0064 Fax: (778) 484-0086 www.hybridelevator.ca			
DATE: Feb. 28/2013	REV. # 2	DWG: NTS	DRAWN by DAE

CONFIDENTIAL PROPRIETARY
 THIS DOCUMENT CONTAINS INFORMATION
 PROPRIETARY TO HYBRID ELEVATOR INC. USE OR
 DISCLOSURE WITHOUT WRITTEN CONSENT OF
 HYBRID ELEVATOR IS EXPRESSLY FORBIDDEN
 © 2012 HYBRID ELEVATOR INC.

HW-DWG # 03

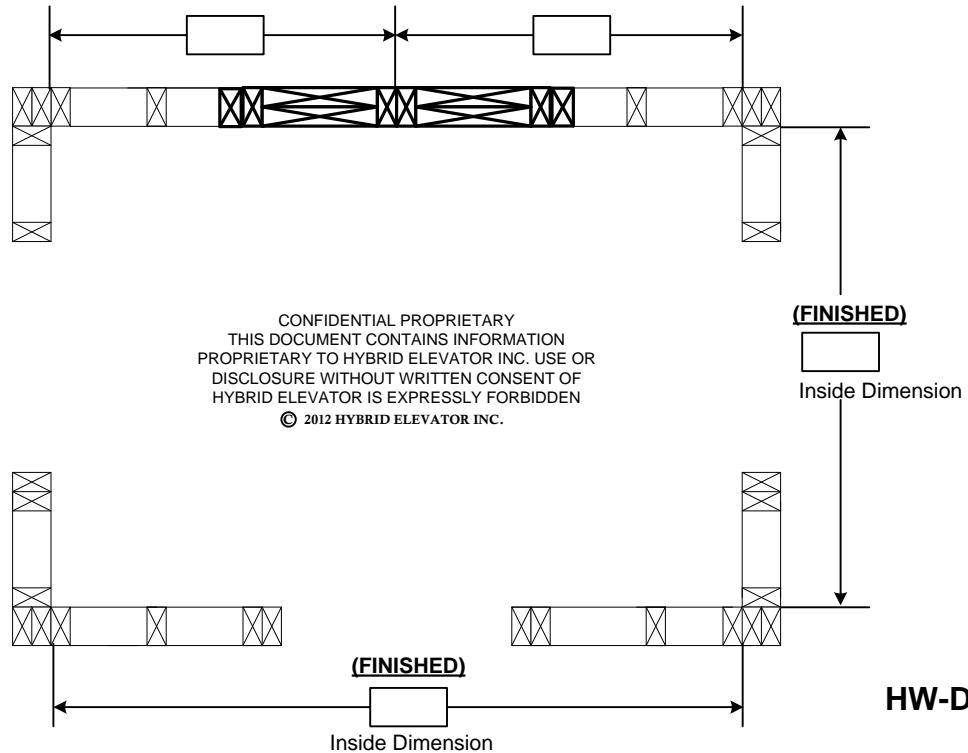
1ST FLOOR

Guide Rail Backing Centerline
(FINISHED)



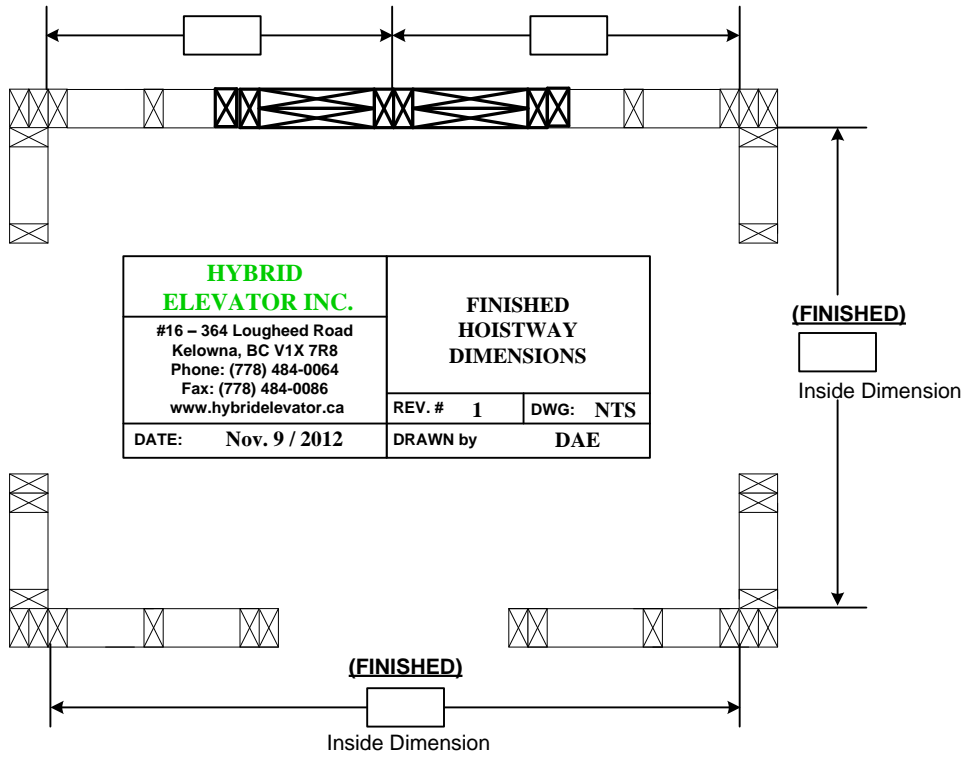
2ND FLOOR

Guide Rail Backing Centerline
(FINISHED)



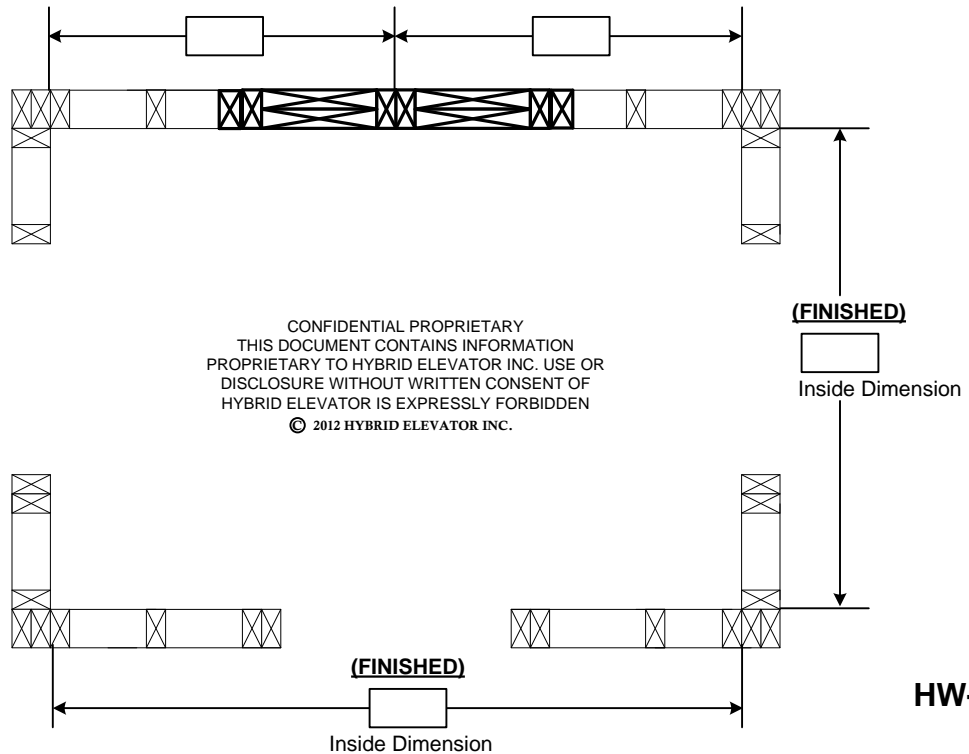
3RD FLOOR

Guide Rail Backing Centerline
(FINISHED)



4th FLOOR

Guide Rail Backing Centerline
(FINISHED)



HOISTWAY AND PIT DETAILS

SERVICE ACCESS MUST BE PROVIDED BY CODE AT THE TOP OF THE HOISTWAY FOR SERVICE TO DRIVE AND CONTROL SYSTEMS, 24" x 24" DOOR.

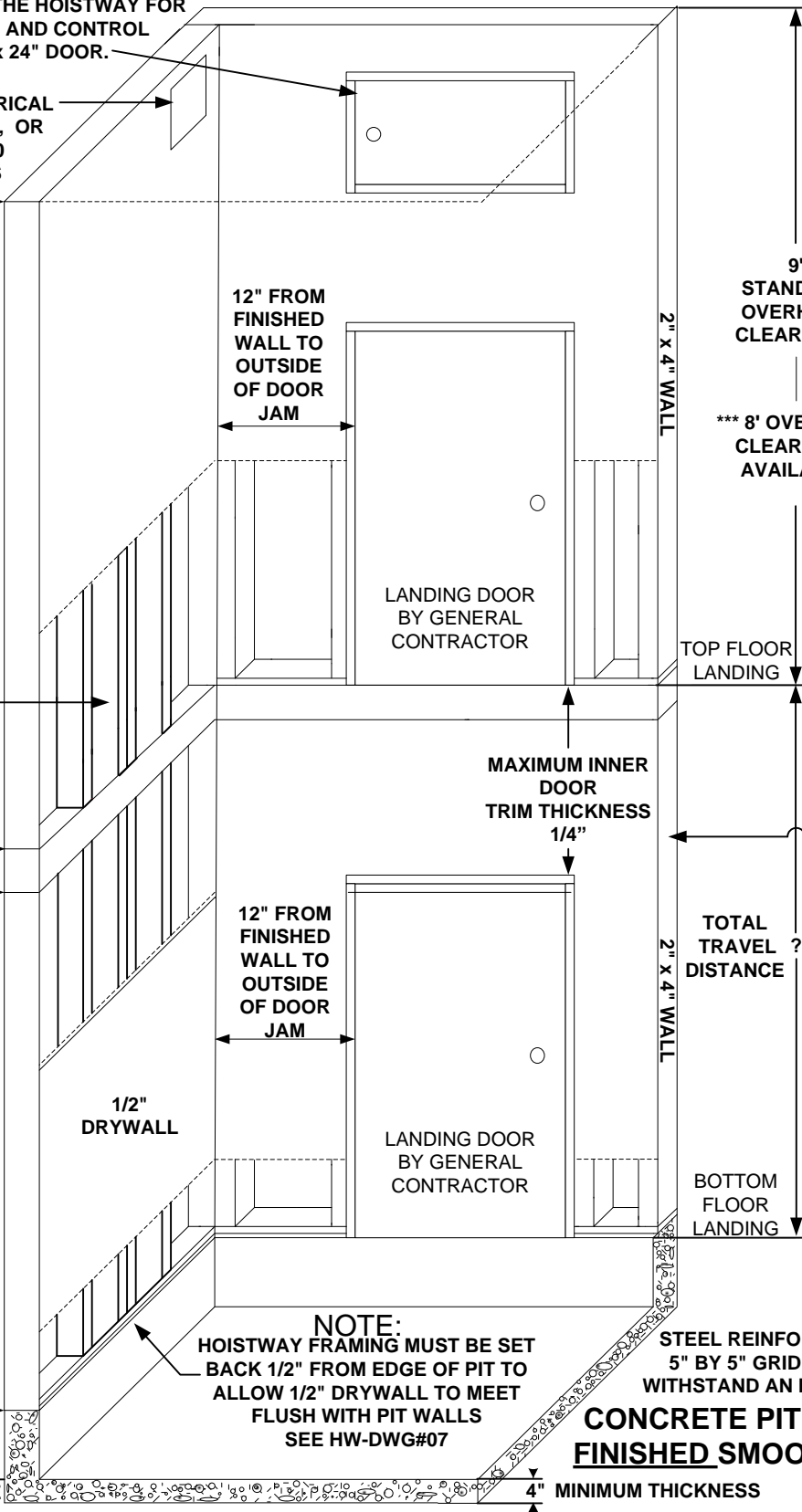
HOISTWAY ELECTRICAL SEE HW-DWG # 9, OR HW-DWG # 10 FOR DETAILS

12' MAXIMUM FOR VERTICAL SUPPORTS WITHOUT INTERMEDIATE SUPPORT

VERTICAL 2"x10" & 2"x4" GUIDE RAIL BACKING

12' MAXIMUM FOR VERTICAL SUPPORTS WITHOUT INTERMEDIATE SUPPORT

PIT DEPTH 16" **10'-0" AVAILABLE



NOTE:
RIGHT HAND DRIVE WALL SHOWN.

NOTE:

DOOR OPENING WALL MUST BE 2"x4" CONSTRUCTION OR DOOR MUST BE RECESSED TO MEET ELEVATOR CODE. THERE CAN BE NO MORE THAN 5" BETWEEN THE INSIDE FACE OF THE HOISTWAY DOOR AND THE OUTSIDE FACE OF THE CAR SEE HW-DWG # 7

NOTE:
HOISTWAY FRAMING MUST BE SET BACK 1/2" FROM EDGE OF PIT TO ALLOW 1/2" DRYWALL TO MEET FLUSH WITH PIT WALLS SEE HW-DWG#07

STEEL REINFORCED CONCRETE SLAB 5" BY 5" GRID MIN. 10 MM REBAR TO WITHSTAND AN IMPACT LOAD OF 5000 LB

CONCRETE PIT FLOOR TO BE FINISHED SMOOTH AND LEVEL

4" MINIMUM THICKNESS

<p>HYBRID ELEVATOR INC. #16 - 364 Lougheed Road Kelowna, BC V1X 7R8 Phone: (778) 484-0064 Fax: (778) 484-0086 www.hybridelevator.ca</p>	<p>RIGHT DRIVE WALL, HOISTWAY & PIT DETAILS</p>	
	<p>REV. # 2</p>	<p>DWG: NTS</p>
<p>DATE: Feb. 28/2013</p>	<p>DRAWN by DAE</p>	

CONFIDENTIAL PROPRIETARY
THIS DOCUMENT CONTAINS INFORMATION PROPRIETARY TO HYBRID ELEVATOR INC. USE OR DISCLOSURE WITHOUT WRITTEN CONSENT OF HYBRID ELEVATOR IS EXPRESSLY FORBIDDEN
© 2012 HYBRID ELEVATOR INC.

HW-DWG # 6A

HOISTWAY AND PIT DETAILS

NOTE:
LEFT
HAND
DRIVE
WALL
SHOWN.

SERVICE ACCESS MUST BE PROVIDED BY CODE AT THE TOP OF THE HOISTWAY FOR SERVICE TO DRIVE AND CONTROL SYSTEMS, 24" x 24" DOOR.

HOISTWAY ELECTRICAL
SEE HW-DWG # 9, OR
HW-DWG # 10
FOR DETAILS

9'
STANDARD
OVERHEAD
CLEARANCE

*** 8' OVERHEAD
CLEARANCE
AVAILABLE

12" FROM
FINISHED
WALL TO
OUTSIDE
OF DOOR
JAM

12' MAXIMUM
FOR VERTICAL
SUPPORTS
WITHOUT
INTERMEDIATE
SUPPORT

VERTICAL
2"x10" &
2"x4"
GUIDE RAIL
BACKING

NOTE:

DOOR OPENING WALL
MUST BE 2"x4"
CONSTRUCTION OR
DOOR MUST BE
RECESSED TO MEET
ELEVATOR CODE.
THERE CAN BE NO
MORE THAN 5"
BETWEEN THE INSIDE
FACE OF THE
HOISTWAY DOOR AND
THE OUTSIDE FACE OF
THE CAR
SEE HW-DWG # 7

TOP FLOOR
LANDING

LANDING DOOR
BY GENERAL
CONTRACTOR

MAXIMUM INNER
DOOR
TRIM THICKNESS
1/4"

TOTAL
TRAVEL
DISTANCE

12" FROM
FINISHED
WALL TO
OUTSIDE
OF DOOR
JAM

12' MAXIMUM
FOR VERTICAL
SUPPORTS
WITHOUT
INTERMEDIATE
SUPPORT

1/2"
DRYWALL

BOTTOM
FLOOR
LANDING

LANDING DOOR
BY GENERAL
CONTRACTOR

STEEL REINFORCED CONCRETE SLAB
5" BY 5" GRID MIN. 10 MM TO WITHSTAND
AN IMPACT LOAD OF 5000 LB

CONCRETE PIT FLOOR TO BE
SMOOTH AND LEVEL

NOTE:

HOISTWAY FRAMING MUST BE SET
BACK 1/2" FROM EDGE OF PIT TO
ALLOW 1/2" DRYWALL TO MEET
FLUSH WITH PIT WALLS
SEE HW-DWG#07

16" PIT DEPTH

MINIMUM THICKNESS 4"

**10'-0" AVAILABLE

HYBRID ELEVATOR INC.		LEFT DRIVE WALL, HOISTWAY & PIT DETAILS	
#16 - 364 Loughheed Road Kelowna, BC V1X 7R8 Phone: (778) 484-0064 Fax: (778) 484-0086 www.hybridelevator.ca		REV. # 2	DWG: NTS
DATE: Feb. 28/2013	DRAWN by		DAE

CONFIDENTIAL PROPRIETARY
THIS DOCUMENT CONTAINS INFORMATION
PROPRIETARY TO HYBRID ELEVATOR INC. USE OR
DISCLOSURE WITHOUT WRITTEN CONSENT OF
HYBRID ELEVATOR IS EXPRESSLY FORBIDDEN
© 2012 HYBRID ELEVATOR INC.

HW-DWG # 6B

HOISTWAY SPECIFICATIONS

PROJECT: _____

DATE: _____

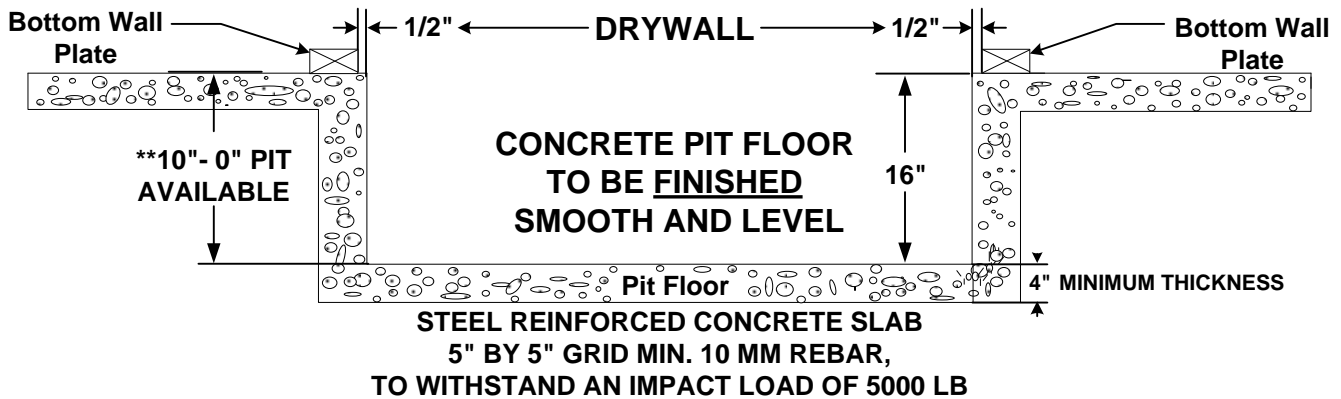
THE FOLLOWING DRAWINGS SHOW THE HOISTWAY LAYOUT FOR THIS PROJECT.

THEY ARE INTENDED AS A GUIDE TO ALLOW YOU TO CONSTRUCT THE HOISTWAY WITH THE CORRECT DIMENSIONS TO FACILITATE INSTALLATION OF THE ELEVATOR. THESE DRAWINGS ARE NOT TO SCALE, NOR ARE THEY INTENDED AS A PRECISE FRAMING LAYOUT. ALL PROVINCIAL AND LOCAL BUILDING CODES MUST BE OBSERVED DURING CONSTRUCTION. PLEASE CAREFULLY READ ALL INSTRUCTIONS AND CONTACT HYBRID ELEVATOR AT THE NUMBER BELOW IF YOU HAVE ANY QUESTIONS OR CONCERNS.

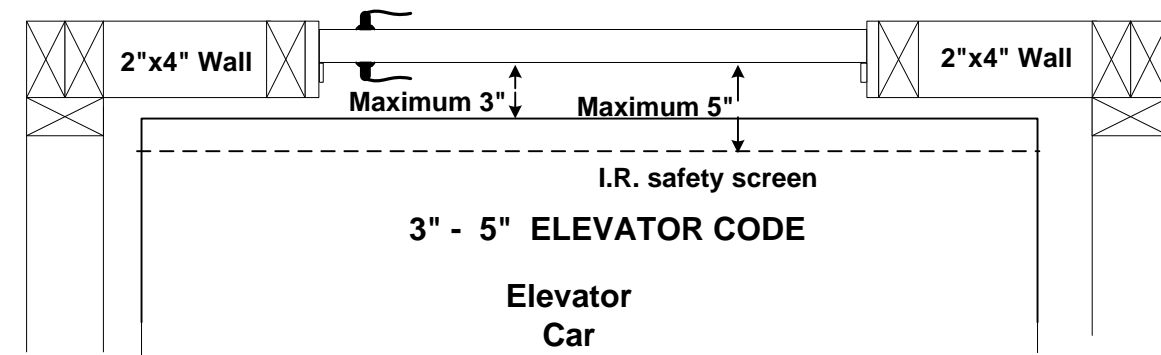
Hybrid Elevator Contact Name: _____

Phone: _____

- 1) All dimensions shown are **FINISHED DIMENSIONS** which includes 1/2" Drywall.
- 2) Pit dimension should match **FINISHED DIMENSIONS** and be a minimum of 16" deep. All framing should be set back 1/2" from the edge of the pit to allow the drywall to meet flush with the pit wall.



- 3) All hoistway door framing must be 2x4 construction or door must be recessed to meet elevator safety codes. There can be no more than 5" between the inside face of the hoistway door and the outside of the car safety screen.



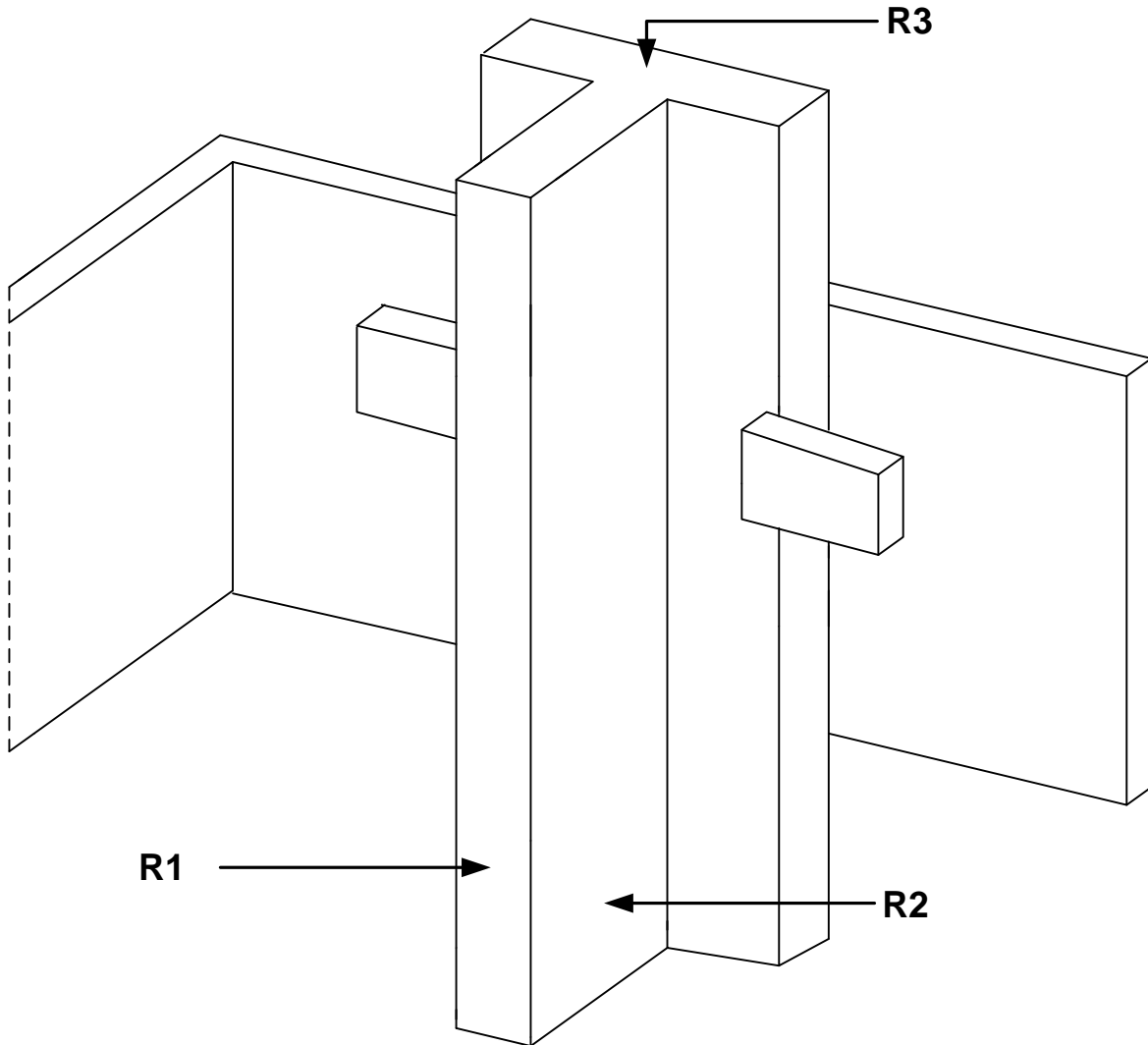
- 4) All door openings must be in line plumb and square, to maintain no more than a 1" running clearance between the car and the walls.

HYBRID ELEVATOR INC.		HOISTWAY PIT & 3" - 5" ELEVATOR CODE	
#16 - 364 Loughheed Road Kelowna, BC V1X 7R8 Phone: (778) 484-0064 Fax: (778) 484-0086 www.hybridelevator.ca		REV. # 2	DWG: NTS
DATE: Feb. 28/2013	DRAWN by DAE		

CONFIDENTIAL PROPRIETARY
 THIS DOCUMENT CONTAINS INFORMATION
 PROPRIETARY TO HYBRID ELEVATOR INC. USE OR
 DISCLOSURE WITHOUT WRITTEN CONSENT OF
 HYBRID ELEVATOR IS EXPRESSLY FORBIDDEN
 © 2012 HYBRID ELEVATOR INC.

HW-DWG # 07

GUIDE RAIL REACTION FORCES



R1	105 LBS
R2	246 LBS
R3	5000 LBS*

**WALL ATTACHMENT PULL-OUT
FORCE IS 145 LBF. PER FASTENER**

**NOT TO BE EXCEEDED
VARIES WITH CAB SIZE, WEIGHT, TRAVEL DISTANCE, ETC.**

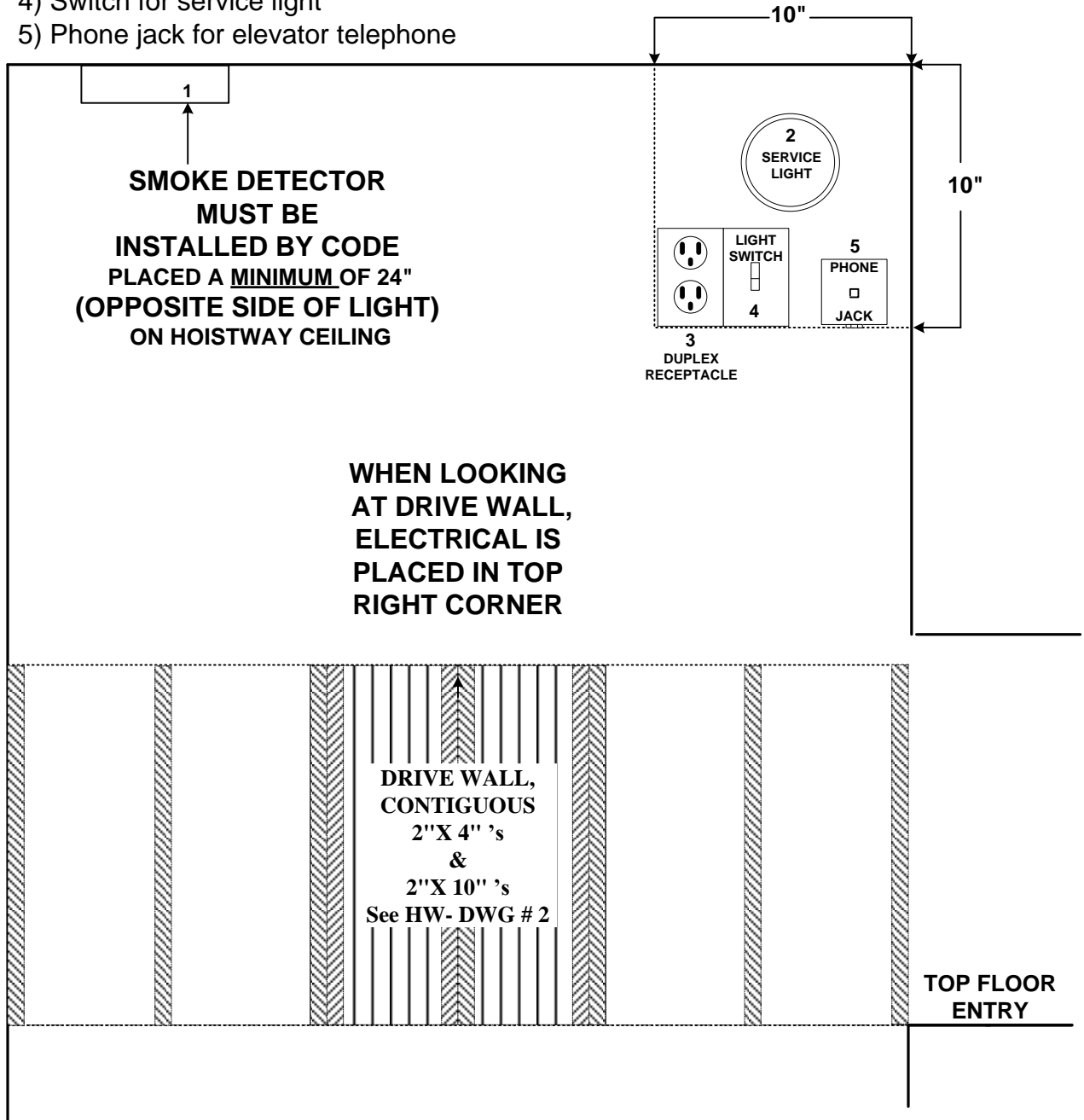
<b style="color: green;">HYBRID ELEVATOR INC. #16 – 364 Lougheed Road Kelowna, BC V1X 7R8 Phone: (778) 484-0064 Fax: (778) 484-0086 www.hybridelevator.ca	GUIDE RAIL REACTION FORCES	
	REV. #	1
DATE: Nov. 9 / 2012	DRAWN by DAE	

CONFIDENTIAL PROPRIETARY
 THIS DOCUMENT CONTAINS INFORMATION
 PROPRIETARY TO HYBRID ELEVATOR INC. USE OR
 DISCLOSURE WITHOUT WRITTEN CONSENT OF
 HYBRID ELEVATOR IS EXPRESSLY FORBIDDEN
 © 2012 HYBRID ELEVATOR INC.

HW-DWG # 08

ELECTRICAL PLACEMENT FOR ELEVATOR HOISTWAY RIGHT HAND DRIVE WALL

- 1) Smoke Detector, hard wired, NOT battery operated
- 2) Service Light with enclosed bulb cover
- 3) Duplex receptacle, Designated circuit, 120/1/60 15 Amp
- 4) Switch for service light
- 5) Phone jack for elevator telephone



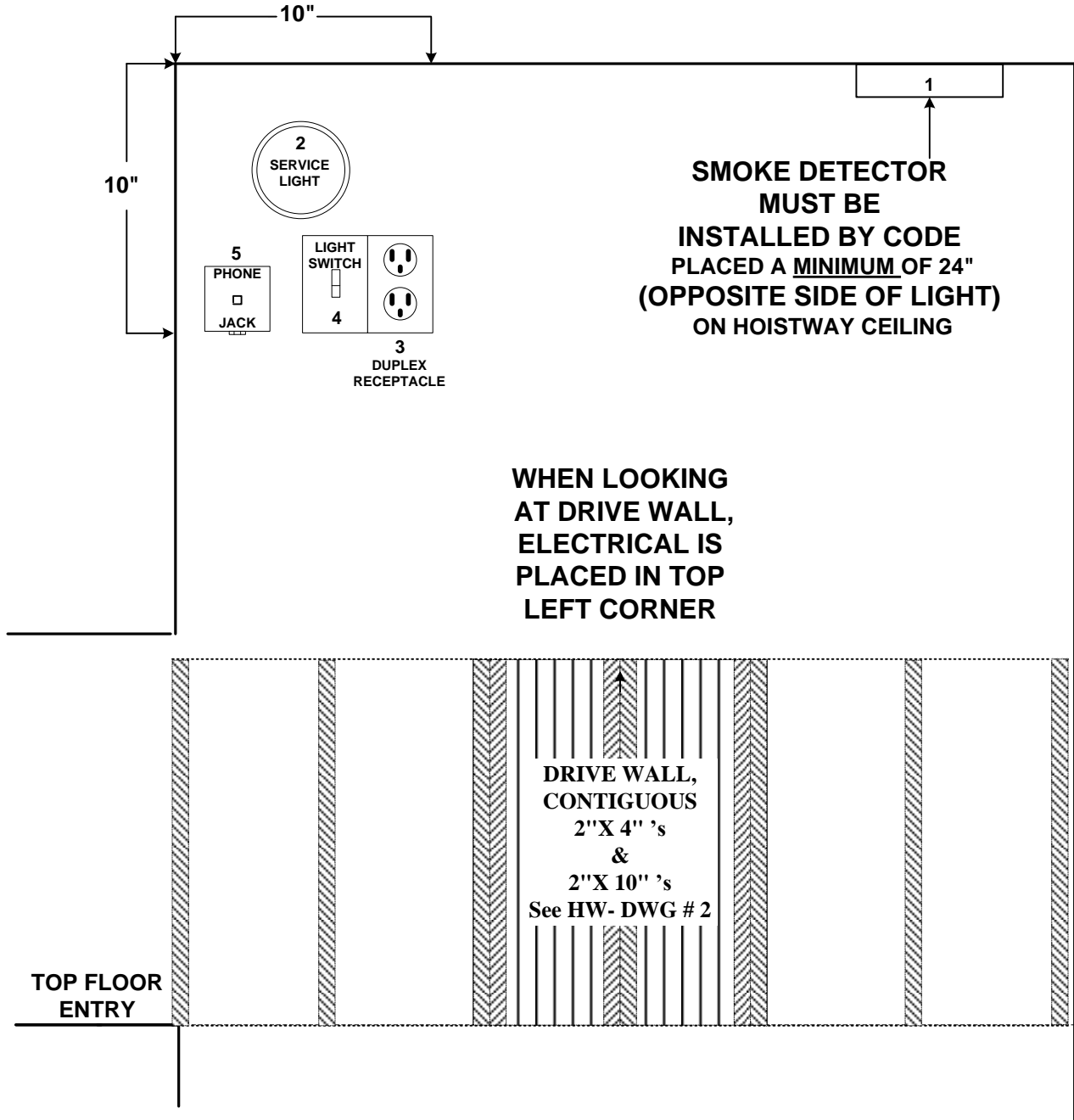
HYBRID ELEVATOR INC.		ELECTRICAL PLACEMENT	
#16 – 364 Lougheed Road Kelowna, BC V1X 7R8 Phone: (778) 484-0064 Fax: (778) 484-0086 www.hybridelevator.ca			
DATE: Nov. 9 / 2012	REV. # 1	DWG: NTS	DRAWN by DAE

CONFIDENTIAL PROPRIETARY
 THIS DOCUMENT CONTAINS INFORMATION
 PROPRIETARY TO HYBRID ELEVATOR INC. USE OR
 DISCLOSURE WITHOUT WRITTEN CONSENT OF
 HYBRID ELEVATOR IS EXPRESSLY FORBIDDEN
 © 2012 HYBRID ELEVATOR INC.

HW-DWG # 9A

ELECTRICAL PLACEMENT FOR ELEVATOR HOISTWAY LEFT HAND DRIVE WALL

- 1) Smoke Detector, hard wired, NOT battery operated
- 2) Service Light with enclosed bulb cover
- 3) Duplex receptacle, Designated circuit, 120/1/60 15 Amp
- 4) Switch for service light
- 5) Phone jack for elevator telephone



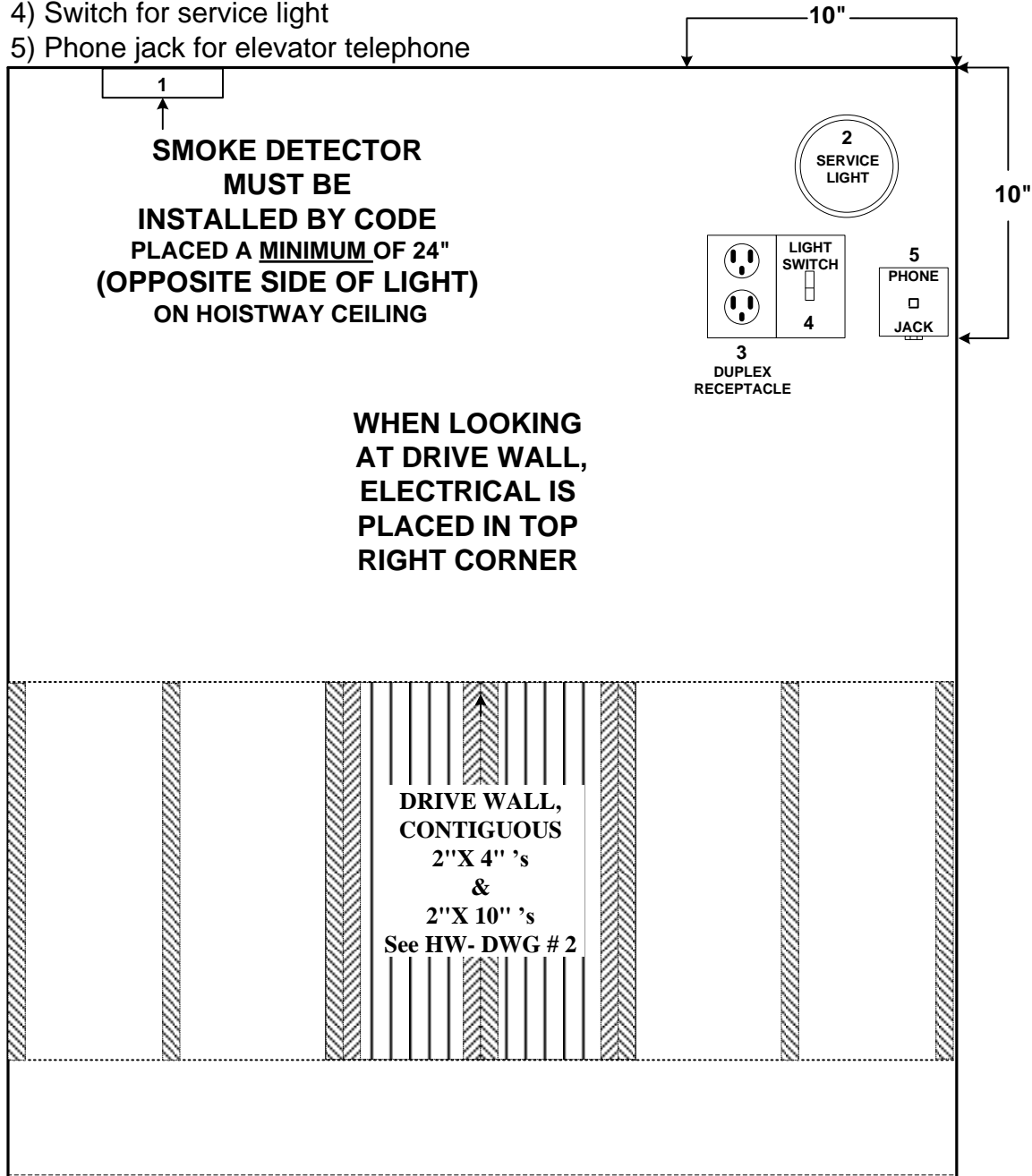
HYBRID ELEVATOR INC.		ELECTRICAL PLACEMENT	
#16 – 364 Lougheed Road Kelowna, BC V1X 7R8 Phone: (778) 484-0064 Fax: (778) 484-0086 www.hybridelevator.ca			
DATE: Nov. 9 / 2012	REV. # 1	DWG: NTS	
	DRAWN by DAE		

CONFIDENTIAL PROPRIETARY
 THIS DOCUMENT CONTAINS INFORMATION
 PROPRIETARY TO HYBRID ELEVATOR INC. USE OR
 DISCLOSURE WITHOUT WRITTEN CONSENT OF
 HYBRID ELEVATOR IS EXPRESSLY FORBIDDEN
 © 2012 HYBRID ELEVATOR INC.

HW-DWG # 9B

ELECTRICAL PLACEMENT FOR ELEVATOR HOISTWAY REAR DRIVE WALL

- 1) Smoke Detector, hard wired, NOT battery operated
- 2) Service Light with enclosed bulb cover
- 3) Duplex receptacle, Designated circuit, 120/1/60 15 Amp
- 4) Switch for service light
- 5) Phone jack for elevator telephone



HYBRID ELEVATOR INC.	ELECTRICAL PLACEMENT	
#16 – 364 Lougheed Road Kelowna, BC V1X 7R8 Phone: (778) 484-0064 Fax: (778) 484-0086 www.hybridelevator.ca	REV. # 1	DWG: NTS
DATE: Nov. 9 / 2012	DRAWN by DAE	

CONFIDENTIAL PROPRIETARY
THIS DOCUMENT CONTAINS INFORMATION
PROPRIETARY TO HYBRID ELEVATOR INC. USE OR
DISCLOSURE WITHOUT WRITTEN CONSENT OF
HYBRID ELEVATOR IS EXPRESSLY FORBIDDEN
© 2012 HYBRID ELEVATOR INC.

HW-DWG # 10