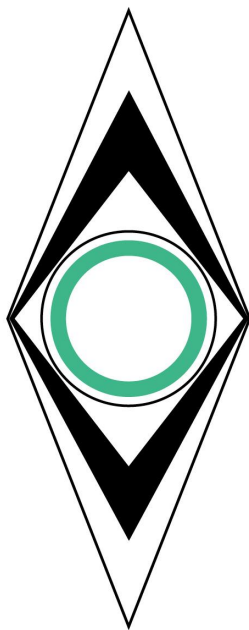


4 3 2 1

HOISTWAY FRAMING & ELECTRICAL SPECIFICATIONS

GENERAL CONTRACTORS AND FRAMERS:
FOR COMPLETE HOISTWAY LAYOUT AND STRUCTURE REQUIREMENTS FOR ELEVATOR INSTALLATION,
PLEASE REFER TO THE ATTACHED DRAWINGS.



HYBRID ELEVATOR INC.

**MANUFACTURERS OF:
ELEVATORS AND DISABILITY LIFTS**

16 - 364 LOUGHEED ROAD
KELOWNA, BC V1X 7R8
778-484-0064

PROJECT: _____

DATE: _____

CONFIDENTIAL & PROPRIETARY: INFORMATION CONTAINED WITHIN IS PROPRIETARY TO HYBRID ELEVATOR INC.
USE OR DISCLOSURE WITHOUT WRITTEN CONSENT OF HYBRID ELEVATOR IS EXPRESSLY FORBIDDEN.

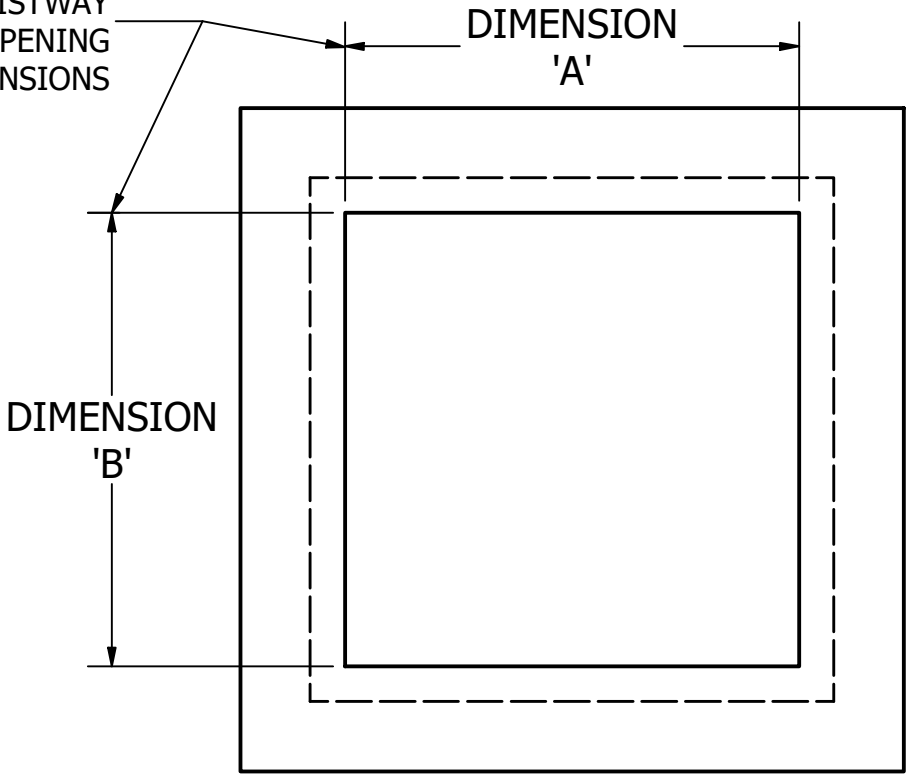
4 3 2 1

HOISTWAY PIT DIMENSIONS *						
HOISTWAY TYPE	DRIVE SIDE	LUMBER TYPE	CAR DEPTH (FT.)	CAR WIDTH (FT.)	PIT DIM 'A' (IN.)	PIT DIM 'B' (IN.)
1	LT/RT	STD/LVL	3	4	49	49.5
1	RW	STD/LVL	3	4	42	56.5
2	LT/RT	STD/LVL	3	4	49	48
1	LT/RT	STD/LVL	3	5	49	61.5
2	LT/RT	STD/LVL	3	5	49	60
3	RW	STD/LVL	3	5	61.5	47.7
4	RW	STD/LVL	3	5	61.5	47.5
1	LT/RT	STD/LVL	4	4	58	50
1	RW	STD/LVL	4	4	50	56.5
2	LT/RT	STD/LVL	4	4	58	48
3	LT/RW	STD/LVL	4	4	65.5	49
4	RT/RW	STD/LVL	4	4	56.5	49
1	LT/RT	STD/LVL	4	5	58	61.5
1	RW	STD/LVL	4	5	61	56.5
2	LT/RT	STD/LVL	4	5	58	60
3	LT/RW	STD/LVL	4	5	61.5	56.5
4	RT/RW	STD/LVL	4	5	61.5	56.5

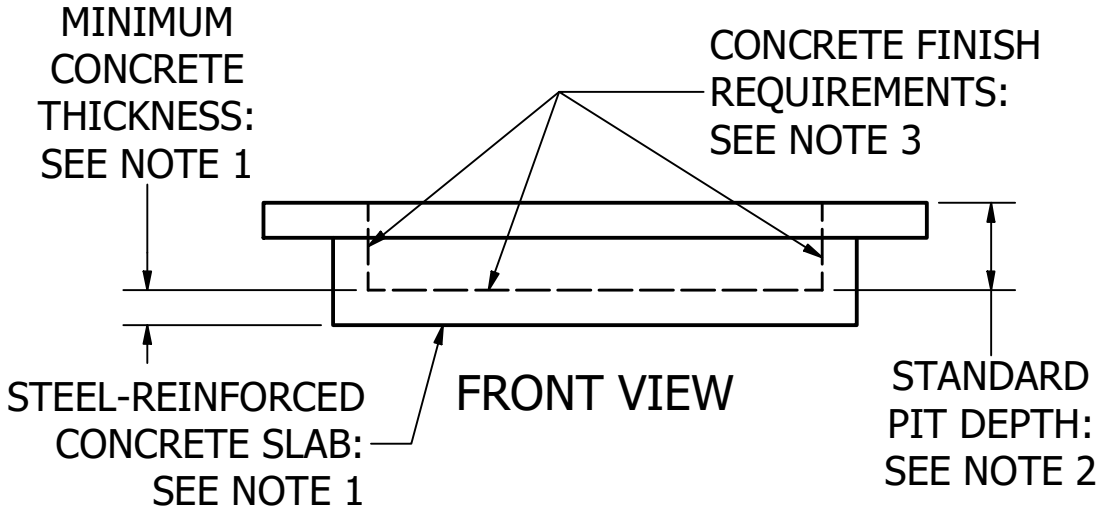
* SEE NOTES 4 AND 5

- NOTES:
- SLAB DETAILS: 5 IN. x 5 IN. GRID, MIN. 3/8 IN. [10mm] REBAR TO WITHSTAND IMPACT LOAD OF 5000 LB. MINIMUM THICKNESS: 4 IN.
 - STANDARD PIT DEPTH: 16 IN.; MINIMUM PIT DEPTH: 10 IN. CUSTOM PIT DEPTHS (TO 0 IN.) AVAILABLE UPON REQUEST.
 - CONCRETE PIT FLOOR AND WALLS TO BE FINISHED SMOOTH, LEVEL, AND SQUARE.
 - DIMENSIONS LISTED FOR EACH CONFIGURATION SHOULD BE CONSIDERED AS MINIMUMS; PLEASE REFER TO SITE HOISTWAY DRAWING FOR CORRECT ORIENTATION.
 - FOR OTHER PIT SIZES, PLEASE CONSULT WITH HEI ENGINEERING.

DIMENSIONS SHOULD MATCH HOISTWAY FINISHED OPENING DIMENSIONS

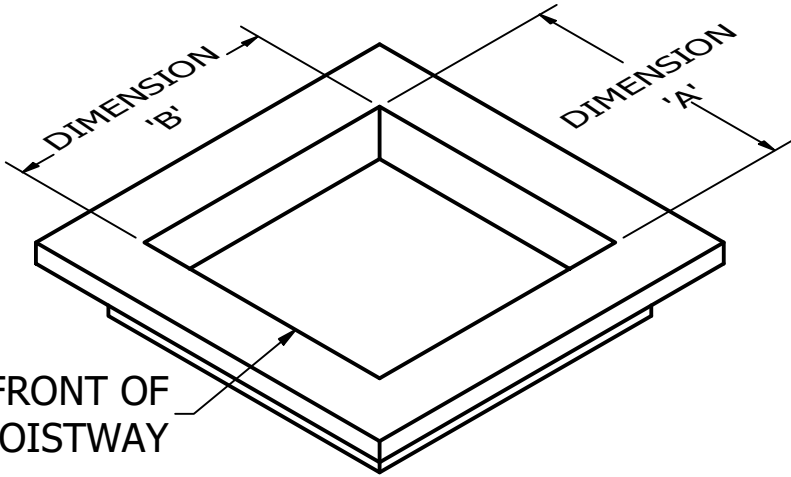


TOP (PLAN) VIEW



CONFIDENTIAL & PROPRIETARY
THIS DOCUMENT CONTAINS INFORMATION PROPRIETARY TO HYBRID ELEVATOR INC.
USE OR DISCLOSURE WITHOUT WRITTEN CONSENT OF HYBRID ELEVATOR IS EXPRESSLY FORBIDDEN.

ALL DIMENSIONS IN INCHES	
DRAWN CS	2019-09-03
APPROVED HYBRID ELEVATOR	2019-09-03



ISOMETRIC VIEW



HYBRID ELEVATOR INC.

MANUFACTURERS OF:
ELEVATORS AND DISABILITY LIFTS

#16 - 634 LOUGHEED ROAD
KELOWNA, BC V1X 7R8
778-484-0064

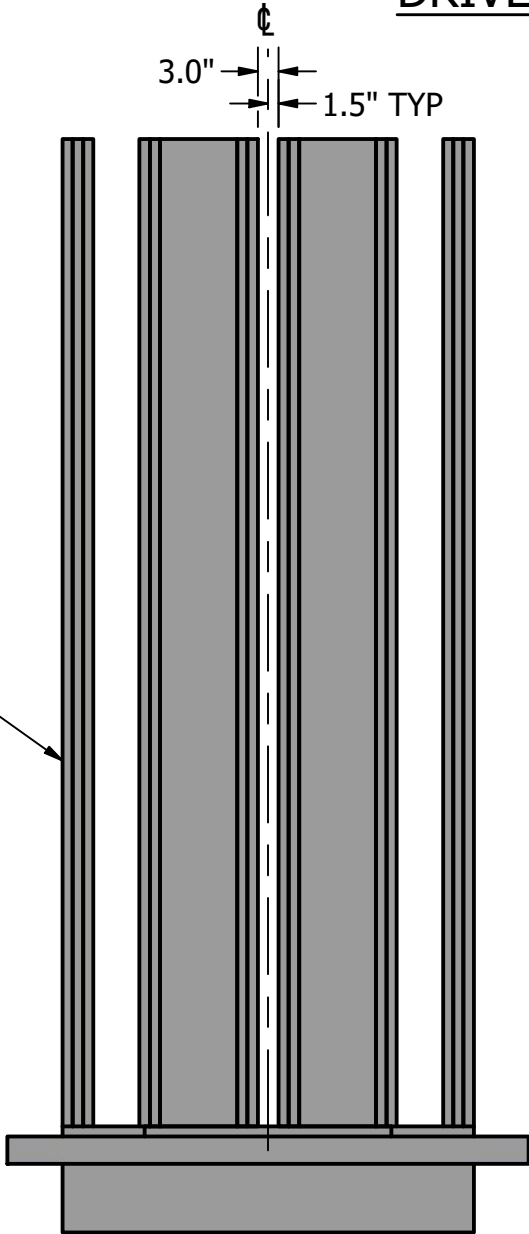
PROPRIETARY AND CONFIDENTIAL

TITLE			
CONSTRUCTION DETAILS: ELEVATOR PIT			
SIZE B	DRAWING # HEI-CST-001		REV 0
SCALE NTS	SHEET 1 OF 1		

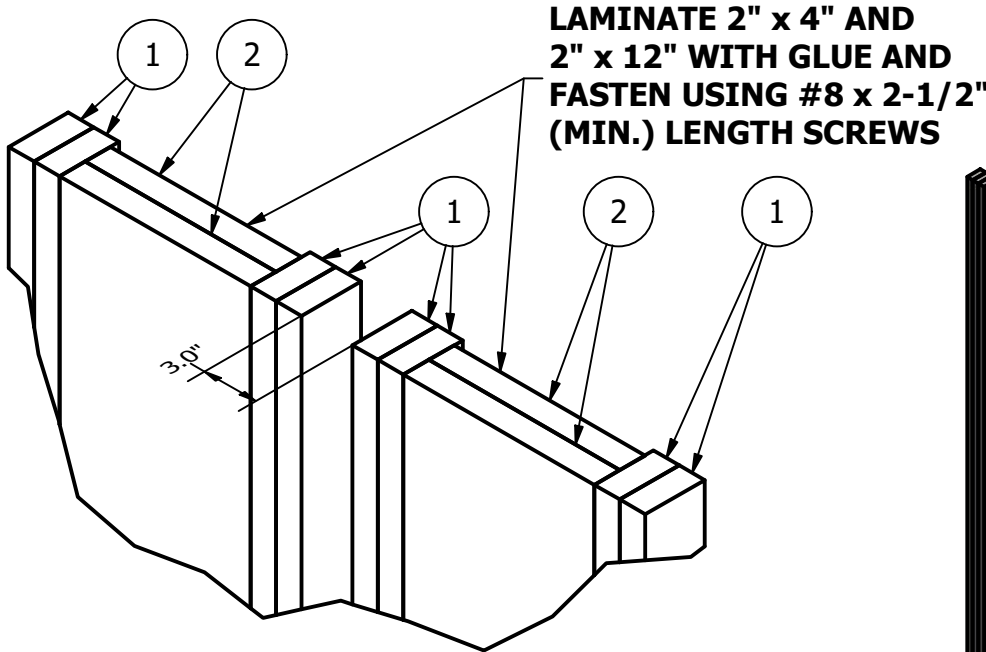
PARTS LIST - DRIVE WALL BRACING		
ITEM #	DESCRIPTION	QTY
1	LUMBER - 2 x 4 IN.	8
2	LUMBER - 2 x 12 IN.	4

DRIVE WALL BRACING: STANDARD & LVL LUMBER

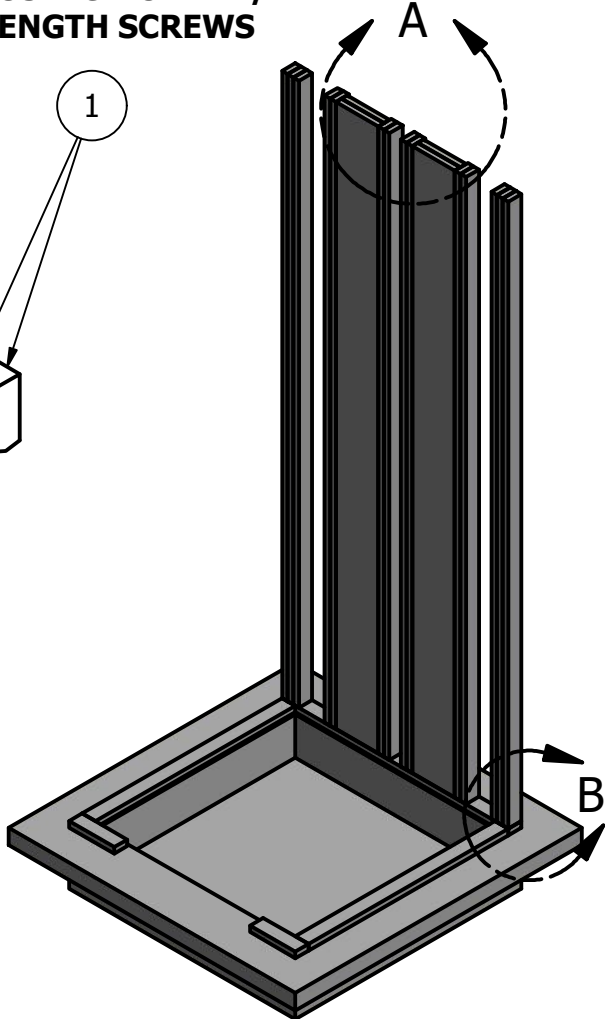
ALL MATERIALS TO
BE CONTIGUOUS
THROUGH FULL LENGTH
OF HOISTWAY



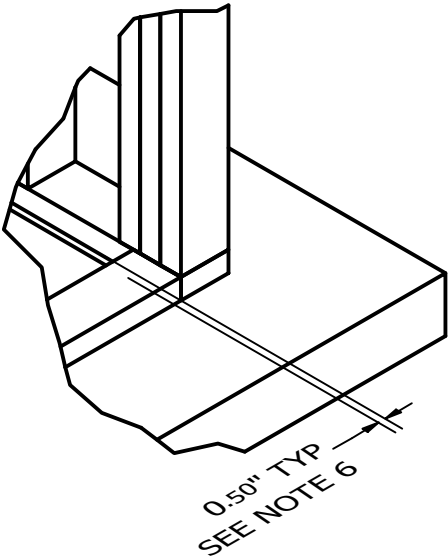
FRONT VIEW



DETAIL A
SCALE 1:8



ISOMETRIC VIEW




DETAIL B
SCALE 1:10

- NOTES:
1. **BRACING PATTERN SHOWN FOR ALL ELEVATOR CONFIGURATIONS (XS/STD/XL).**
 2. DRIVE WALL BRACING SHOULD BE CENTERED ON ELEVATOR PIT DRIVE WALL LOCATION, UNLESS OTHERWISE SPECIFIED.
 3. OVERLAP JOINTS AS NECESSARY FOR STRUCTURAL SUPPORT.
 4. ELEVATOR RAIL BACKING MUST BE TIED TO A HORIZONTAL STRUCTURAL MEMBER (HEADER OR FLOOR PLATE) AT TOP & BOTTOM, WITH A MAXIMUM OF 12 FT./3.66m IN BETWEEN.
 5. CONTRACTOR IS RESPONSIBLE FOR ENSURING ADEQUATE SUPPORT IN WALL FOR ELEVATOR RAIL FASTENING. VERTICAL SPANS OF ELEVATOR RAIL BACKING MUST NOT EXCEED INTERVALS OF 12 FT./3.66m WITHOUT INTERMEDIATE BACKING.
 6. DRIVE WALL FRAMING SHOULD BE OFFSET 1/2 IN./13mm FROM ELEVATOR PIT DRIVE WALL AND SHEETED WITH 1/2 IN. PLYWOOD. ALL FINISHED HOISTWAY WALLS **MUST BE FLUSH** WITH ELEVATOR PIT WALLS.
 7. IF ICF MATERIAL IS SPECIFIED, **PLEASE CONTACT HYBRID ELEVATOR** FOR INSTRUCTIONS.

CONFIDENTIAL & PROPRIETARY
THIS DOCUMENT CONTAINS INFORMATION
PROPRIETARY TO HYBRID ELEVATOR INC.
USE OR DISCLOSURE WITHOUT WRITTEN
CONSENT OF HYBRID ELEVATOR IS
EXPRESSLY FORBIDDEN.

ALL DIMENSIONS IN INCHES	
DRAWN CS	2019-09-03
APPROVED HYBRID ELEVATOR	2019-09-03
3rd ANGLE PROJECTION	

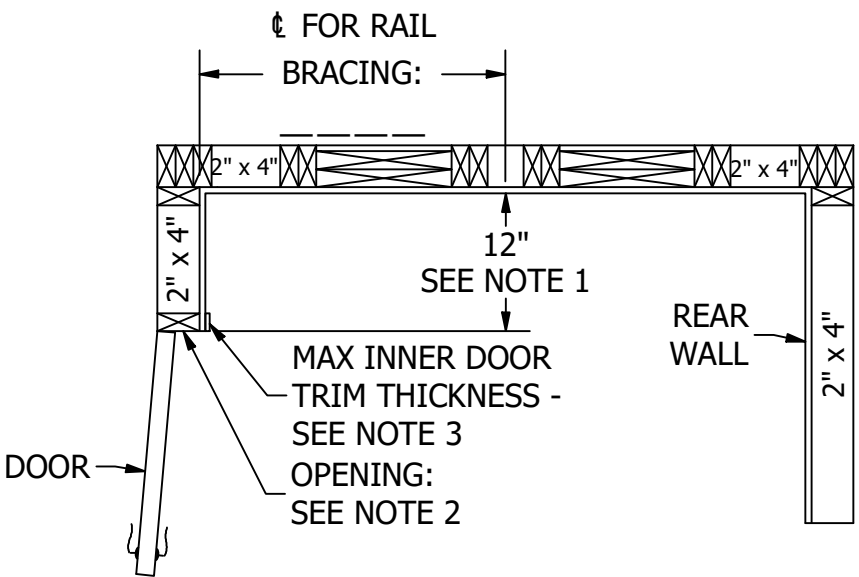


HYBRID ELEVATOR INC.
MANUFACTURERS OF:
ELEVATORS AND DISABILITY LIFTS

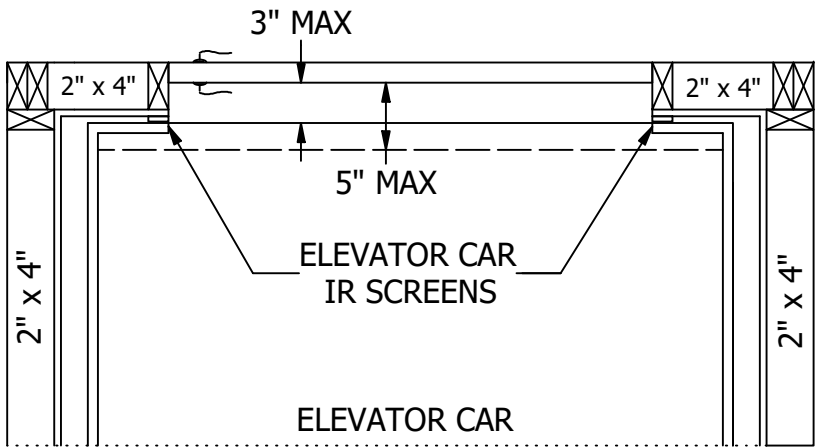
#16 - 634 LOUGHEED ROAD
KELOWNA, BC V1X 7R8
778-484-0064
PROPRIETARY AND CONFIDENTIAL

TITLE CONSTRUCTION DETAILS: DRIVE WALL BRACING (STD/LVL)	
SIZE B	DRAWING # HEI-CST-002
SCALE NTS	REV 0
SHEET 1 OF 1	

DOOR LAYOUTS



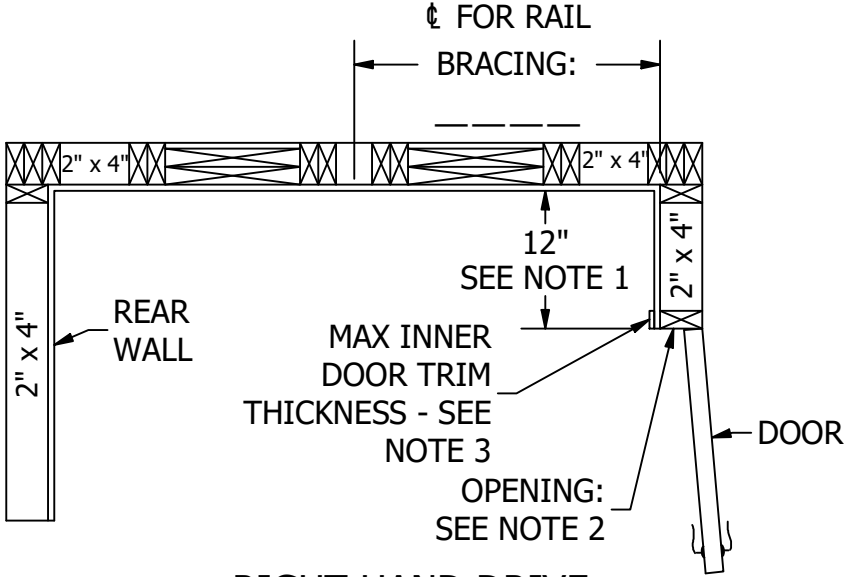
LEFT HAND DRIVE



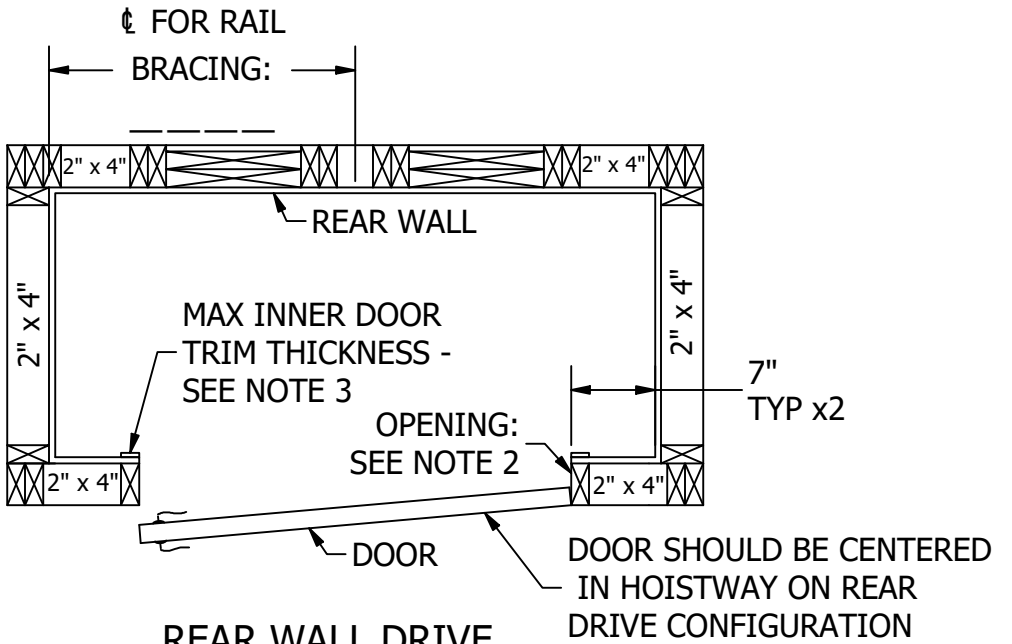
3 X 5 ELEVATOR RULE

ELEVATOR DOORS MUST MEET THE 3 x 5 RULE:
MAX DISTANCE 3 IN./75mm BETWEEN INSIDE FACE OF
HOISTWAY DOOR AND ELEVATOR CAR.
MAX DISTANCE 5 IN./125mm BETWEEN INSIDE FACE OF
HOISTWAY DOOR AND IR SAFETY SCREENS.

- NOTES:
- REQUIRED CLEAR DISTANCE (12 IN./300mm) INSIDE FROM FINISHED WALL (1/2 IN. PLYWOOD OR DRYWALL) TO EDGE OF FINISHED DOOR FRAME FOR LEFT- OR RIGHT-DRIVE CONFIGURATIONS.
 - DOORS MUST BE IN LINE AND PLUMB TO EACH OTHER FLOOR TO FLOOR. MAXIMUM 1 IN. RUNNING CLEARANCE BETWEEN THE**
 - HOISTWAY WALLS AND THE ELEVATOR CAR.**
 - MAXIMUM INNER DOOR TRIM THICKNESS (OUTSIDE OF DRYWALL) IS 3/8 IN./10mm (BY CODE) FOR RUNNING CLEARANCE.
 - DOOR FRAMING MUST BE OF 2" x 4" CONSTRUCTION, OR DOOR MUST BE RECESSED, TO MEET ELEVATOR CODE.



RIGHT HAND DRIVE



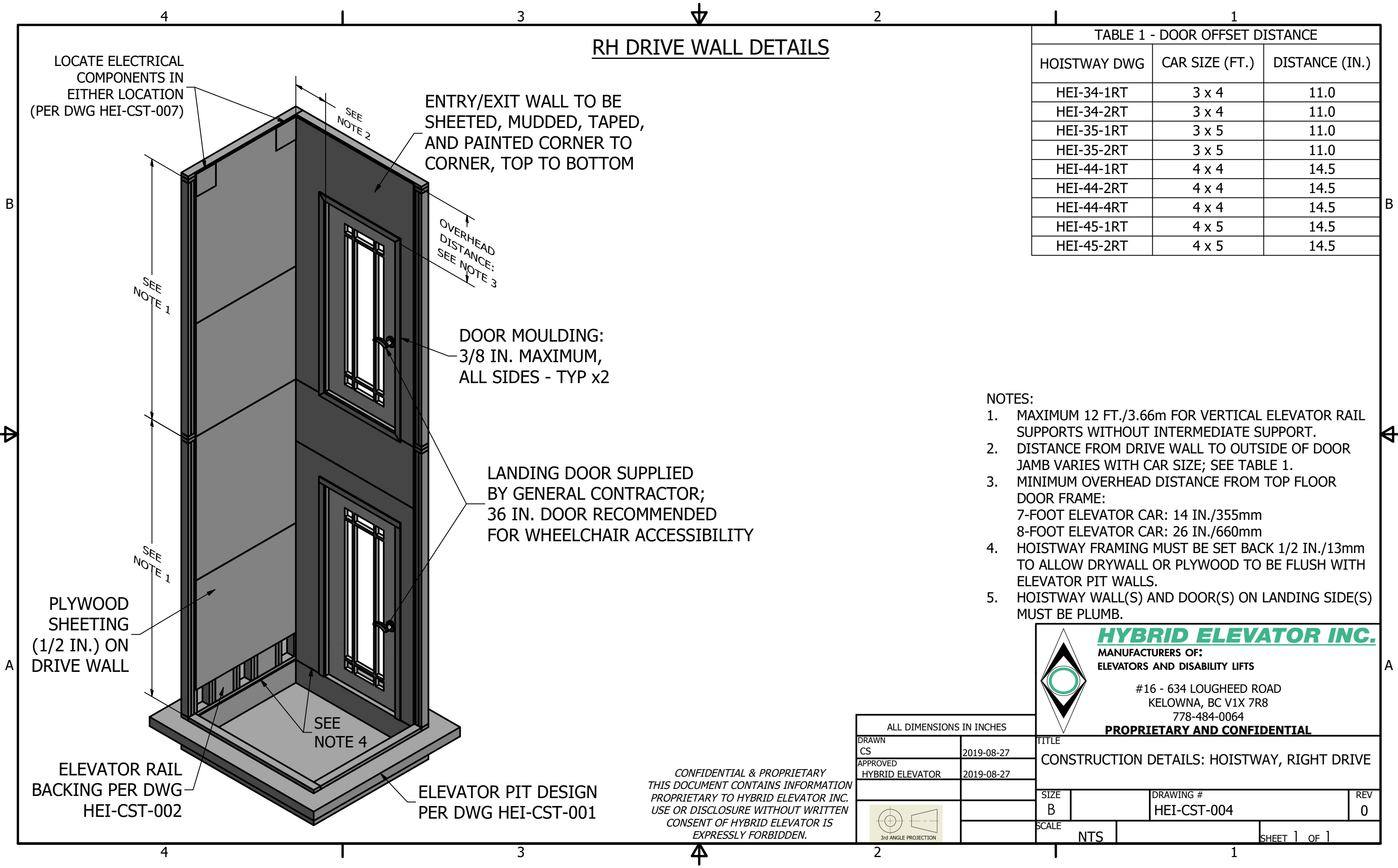
REAR WALL DRIVE

* REFER TO SPECIFIC HOISTWAY DRAWINGS
FOR ADDITIONAL INFORMATION AND DETAILS.

CONFIDENTIAL & PROPRIETARY
THIS DOCUMENT CONTAINS INFORMATION
PROPRIETARY TO HYBRID ELEVATOR INC.
USE OR DISCLOSURE WITHOUT WRITTEN
CONSENT OF HYBRID ELEVATOR IS
EXPRESSLY FORBIDDEN.

ALL DIMENSIONS IN INCHES			
DRAWN	CS	2019-09-16	TITLE
APPROVED	HYBRID ELEVATOR	2019-09-16	CONSTRUCTION DETAILS: DOOR LAYOUTS
SIZE	B	DRAWING #	HEI-CST-003
SCALE	NTS	REV	0
SHEET 1 OF 1			

HYBRID ELEVATOR INC.
MANUFACTURERS OF:
ELEVATORS AND DISABILITY LIFTS
#16 - 634 LOUGHEED ROAD
KELOWNA, BC V1X 7R8
778-484-0064
PROPRIETARY AND CONFIDENTIAL



RH DRIVE WALL DETAILS

TABLE 1 - DOOR OFFSET DISTANCE


HOISTWAY DWG	CAR SIZE (FT.)	DISTANCE (IN.)
HEI-34-1RT	3 x 4	11.0
HEI-34-2RT	3 x 4	11.0
HEI-35-1RT	3 x 5	11.0
HEI-35-2RT	3 x 5	11.0
HEI-44-1RT	4 x 4	14.5
HEI-44-2RT	4 x 4	14.5
HEI-44-4RT	4 x 4	14.5
HEI-45-1RT	4 x 5	14.5
HEI-45-2RT	4 x 5	14.5

- NOTES:
- 1. MAXIMUM 12 FT./3.66m FOR VERTICAL ELEVATOR RAIL SUPPORTS WITHOUT INTERMEDIATE SUPPORT.
 - 2. DISTANCE FROM DRIVE WALL TO OUTSIDE OF DOOR JAMB VARIES WITH CAR SIZE; SEE TABLE 1.
 - 3. MINIMUM OVERHEAD DISTANCE FROM TOP FLOOR DOOR FRAME:
7-FOOT ELEVATOR CAR: 14 IN./355mm
8-FOOT ELEVATOR CAR: 26 IN./660mm
 - 4. HOISTWAY FRAMING MUST BE SET BACK 1/2 IN./13mm TO ALLOW DRYWALL OR PLYWOOD TO BE FLUSH WITH ELEVATOR PIT WALLS.
 - 5. HOISTWAY WALL(S) AND DOOR(S) ON LANDING SIDE(S) MUST BE PLUMB.

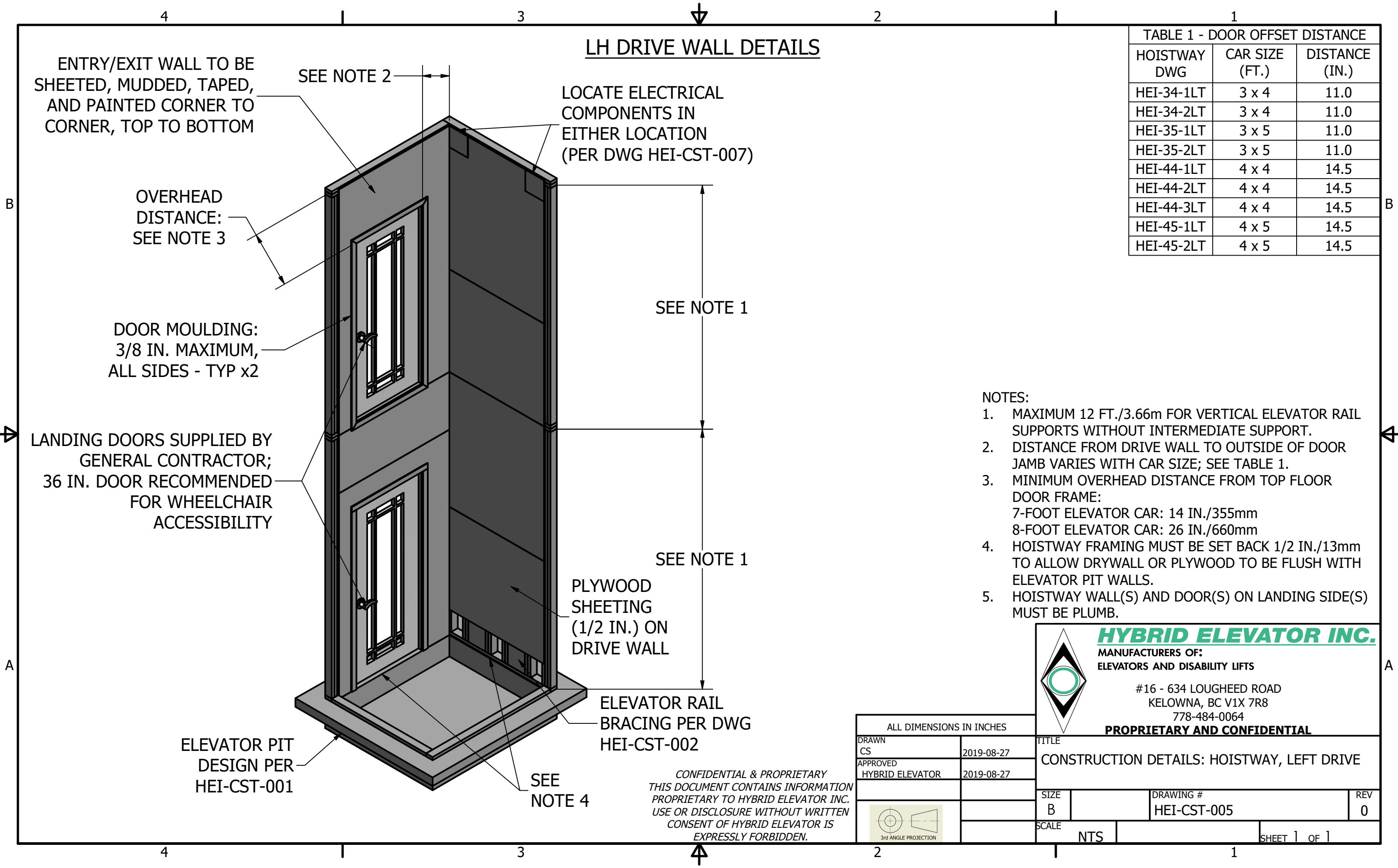


HYBRID ELEVATOR INC.
MANUFACTURERS OF:
ELEVATORS AND DISABILITY LIFTS

#16 - 634 LOUGHEED ROAD
KELOWNA, BC V1X 7R8
778-484-0064
PROPRIETARY AND CONFIDENTIAL

ALL DIMENSIONS IN INCHES		TITLE		
DRAWN	CS	2019-08-27	CONSTRUCTION DETAILS: HOISTWAY, RIGHT DRIVE	
APPROVED	HYBRID ELEVATOR	2019-08-27		
		SIZE	DRAWING #	REV
		B	HEI-CST-004	0
		SCALE	SHEET 1 OF 1	
		NTS		

CONFIDENTIAL & PROPRIETARY
THIS DOCUMENT CONTAINS INFORMATION
PROPRIETARY TO HYBRID ELEVATOR INC.
USE OR DISCLOSURE WITHOUT WRITTEN
CONSENT OF HYBRID ELEVATOR IS
EXPRESSLY FORBIDDEN.



LH DRIVE WALL DETAILS

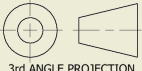
TABLE 1 - DOOR OFFSET DISTANCE		
HOISTWAY DWG	CAR SIZE (FT.)	DISTANCE (IN.)
HEI-34-1LT	3 x 4	11.0
HEI-34-2LT	3 x 4	11.0
HEI-35-1LT	3 x 5	11.0
HEI-35-2LT	3 x 5	11.0
HEI-44-1LT	4 x 4	14.5
HEI-44-2LT	4 x 4	14.5
HEI-44-3LT	4 x 4	14.5
HEI-45-1LT	4 x 5	14.5
HEI-45-2LT	4 x 5	14.5

- NOTES:
- 1. MAXIMUM 12 FT./3.66m FOR VERTICAL ELEVATOR RAIL SUPPORTS WITHOUT INTERMEDIATE SUPPORT.
 - 2. DISTANCE FROM DRIVE WALL TO OUTSIDE OF DOOR JAMB VARIES WITH CAR SIZE; SEE TABLE 1.
 - 3. MINIMUM OVERHEAD DISTANCE FROM TOP FLOOR DOOR FRAME:
7-FOOT ELEVATOR CAR: 14 IN./355mm
8-FOOT ELEVATOR CAR: 26 IN./660mm
 - 4. HOISTWAY FRAMING MUST BE SET BACK 1/2 IN./13mm TO ALLOW DRYWALL OR PLYWOOD TO BE FLUSH WITH ELEVATOR PIT WALLS.
 - 5. HOISTWAY WALL(S) AND DOOR(S) ON LANDING SIDE(S) MUST BE PLUMB.



HYBRID ELEVATOR INC.
MANUFACTURERS OF:
ELEVATORS AND DISABILITY LIFTS

#16 - 634 LOUGHEED ROAD
KELOWNA, BC V1X 7R8
778-484-0064
PROPRIETARY AND CONFIDENTIAL

ALL DIMENSIONS IN INCHES		TITLE		
DRAWN CS	2019-08-27	CONSTRUCTION DETAILS: HOISTWAY, LEFT DRIVE		
APPROVED HYBRID ELEVATOR	2019-08-27			
		SIZE B	DRAWING # HEI-CST-005	REV 0
		SCALE NTS	SHEET 1 OF 1	

CONFIDENTIAL & PROPRIETARY
THIS DOCUMENT CONTAINS INFORMATION
PROPRIETARY TO HYBRID ELEVATOR INC.
USE OR DISCLOSURE WITHOUT WRITTEN
CONSENT OF HYBRID ELEVATOR IS
EXPRESSLY FORBIDDEN.

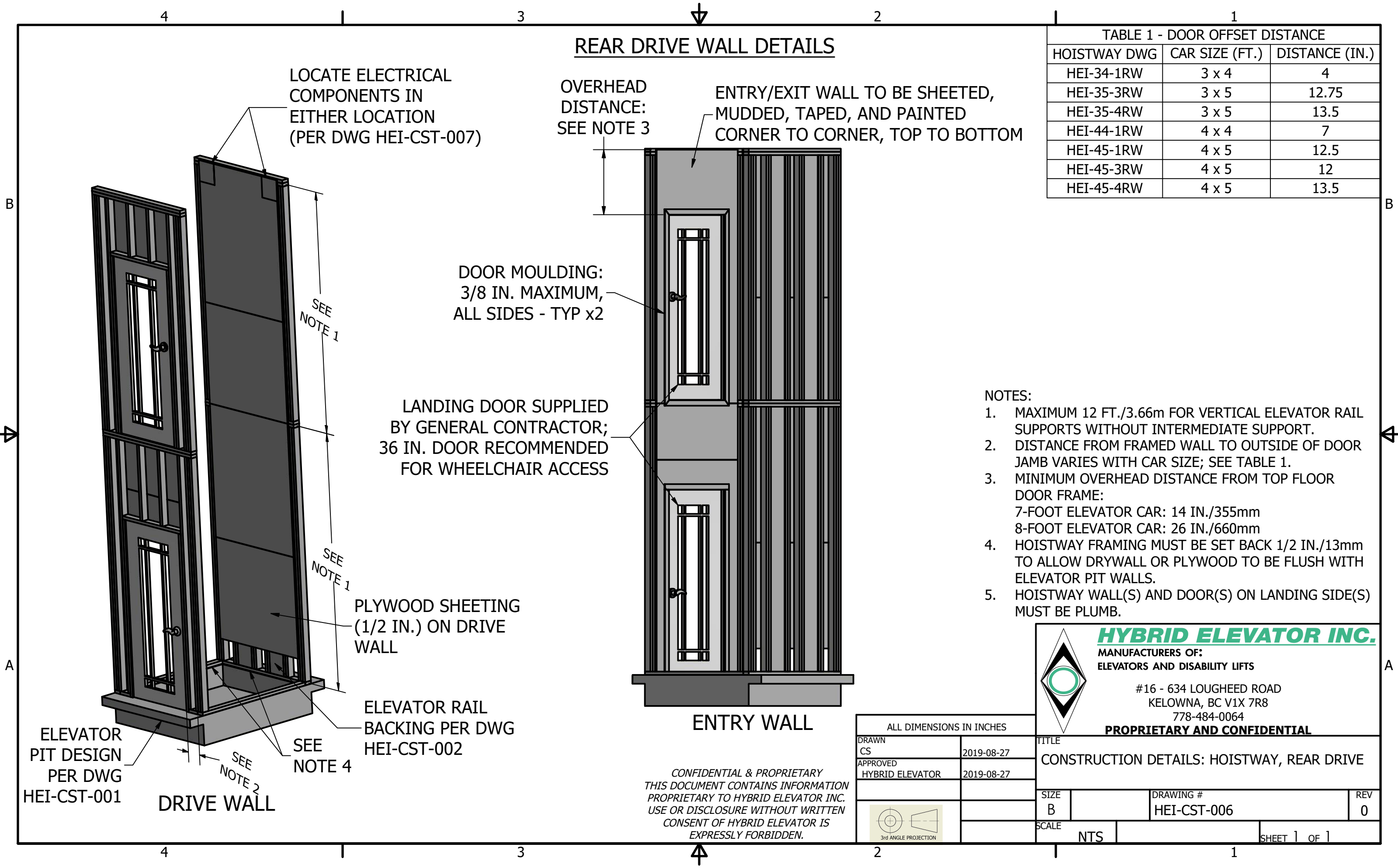



TABLE 1 - DOOR OFFSET DISTANCE		
HOISTWAY DWG	CAR SIZE (FT.)	DISTANCE (IN.)
HEI-34-1RW	3 x 4	4
HEI-35-3RW	3 x 5	12.75
HEI-35-4RW	3 x 5	13.5
HEI-44-1RW	4 x 4	7
HEI-45-1RW	4 x 5	12.5
HEI-45-3RW	4 x 5	12
HEI-45-4RW	4 x 5	13.5

- NOTES:
- 1. MAXIMUM 12 FT./3.66m FOR VERTICAL ELEVATOR RAIL SUPPORTS WITHOUT INTERMEDIATE SUPPORT.
 - 2. DISTANCE FROM FRAMED WALL TO OUTSIDE OF DOOR JAMB VARIES WITH CAR SIZE; SEE TABLE 1.
 - 3. MINIMUM OVERHEAD DISTANCE FROM TOP FLOOR DOOR FRAME:
7-FOOT ELEVATOR CAR: 14 IN./355mm
8-FOOT ELEVATOR CAR: 26 IN./660mm
 - 4. HOISTWAY FRAMING MUST BE SET BACK 1/2 IN./13mm TO ALLOW DRYWALL OR PLYWOOD TO BE FLUSH WITH ELEVATOR PIT WALLS.
 - 5. HOISTWAY WALL(S) AND DOOR(S) ON LANDING SIDE(S) MUST BE PLUMB.

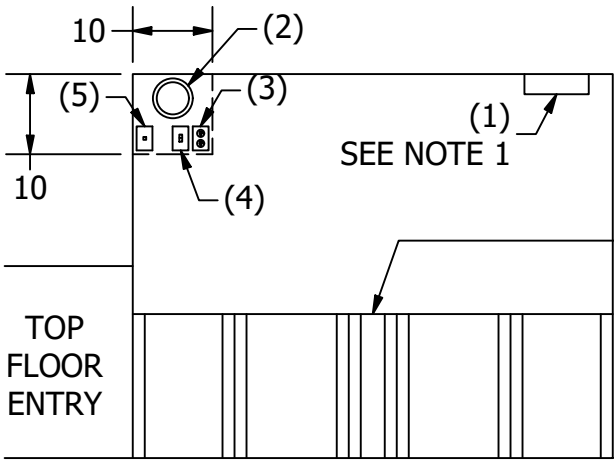


HYBRID ELEVATOR INC.
MANUFACTURERS OF:
ELEVATORS AND DISABILITY LIFTS

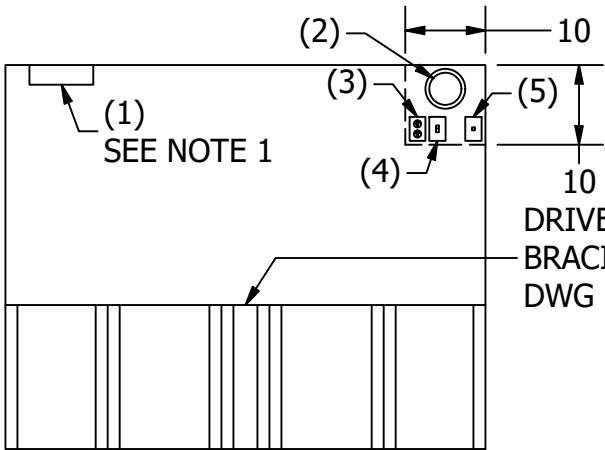
#16 - 634 LOUGHEED ROAD
KELOWNA, BC V1X 7R8
778-484-0064
PROPRIETARY AND CONFIDENTIAL

DRAWN CS		2019-08-27		TITLE	
APPROVED HYBRID ELEVATOR		2019-08-27		CONSTRUCTION DETAILS: HOISTWAY, REAR DRIVE	
SIZE B	DRAWING # HEI-CST-006			REV 0	
SCALE NTS	SHEET 1 OF 1				

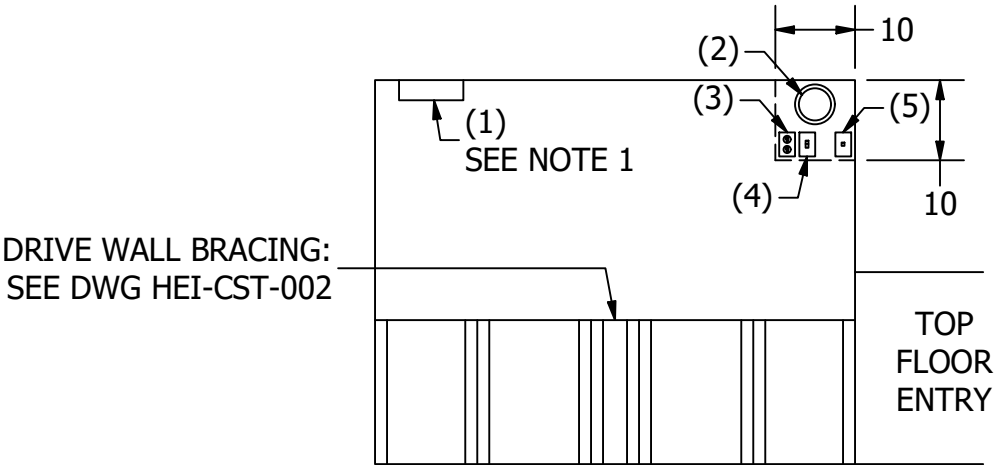
ELECTRICAL COMPONENT PLACEMENT DETAILS



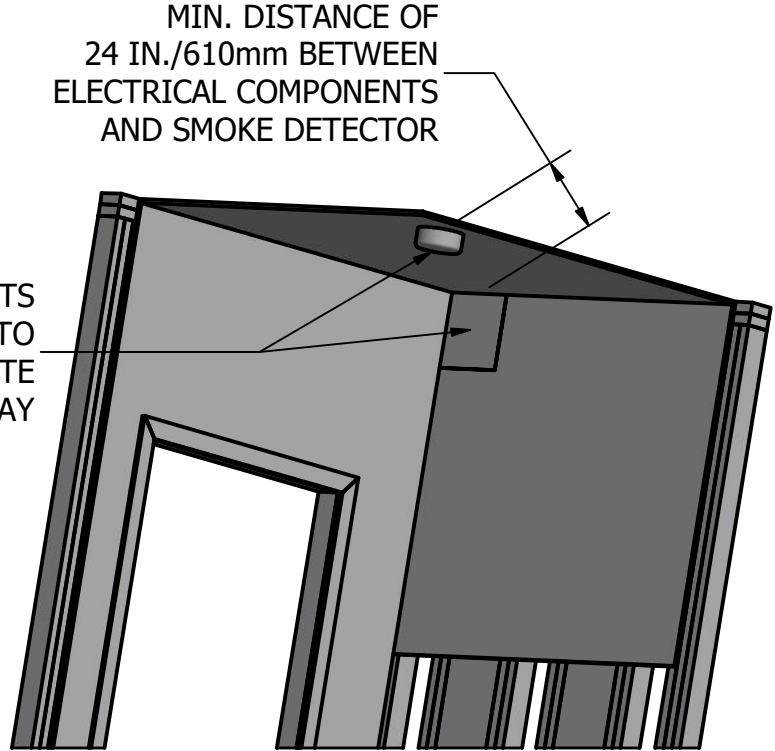
LEFT-SIDE DRIVE WALL
WHEN LOOKING AT DRIVE WALL,
ELECTRICAL COMPONENTS ARE
PLACED IN TOP LEFT CORNER



REAR DRIVE WALL
WHEN LOOKING AT DRIVE WALL,
ELECTRICAL COMPONENTS ARE
PLACED IN TOP RIGHT CORNER



RIGHT-SIDE DRIVE WALL
WHEN LOOKING AT DRIVE WALL,
ELECTRICAL COMPONENTS ARE
PLACED IN TOP RIGHT CORNER



SMOKE DETECTOR LOCATION

COMPONENT LIST

- (1) SMOKE DETECTOR, HARD WIRED (NOT BATTERY-OPERATED)
- (2) SERVICE LIGHT WITH ENCLOSED BULB COVER
- (3) DUPLEX RECEPTACLE, DESIGNATED CIRCUIT W/15 AMP BREAKER, 120/1/60
- (4) SERVICE LIGHT SWITCH
- (5) PHONE JACK FOR ELEVATOR TELEPHONE

ADDITIONAL NOTES:

- 1. SMOKE DETECTOR MUST BE INSTALLED (REQUIRED BY CODE) AND PLACED 24 IN./610mm (MIN.) FROM LIGHT ON OPPOSITE SIDE OF HOISTWAY CEILING.
- 2. CO2 DETECTOR **MUST NOT BE INSTALLED** IN ELEVATOR HOISTWAY.

CONFIDENTIAL & PROPRIETARY
THIS DOCUMENT CONTAINS INFORMATION
PROPRIETARY TO HYBRID ELEVATOR INC.
USE OR DISCLOSURE WITHOUT WRITTEN
CONSENT OF HYBRID ELEVATOR IS
EXPRESSLY FORBIDDEN.

ALL DIMENSIONS IN INCHES	
DRAWN CS	2019-09-16
APPROVED HYBRID ELEVATOR	2019-09-16

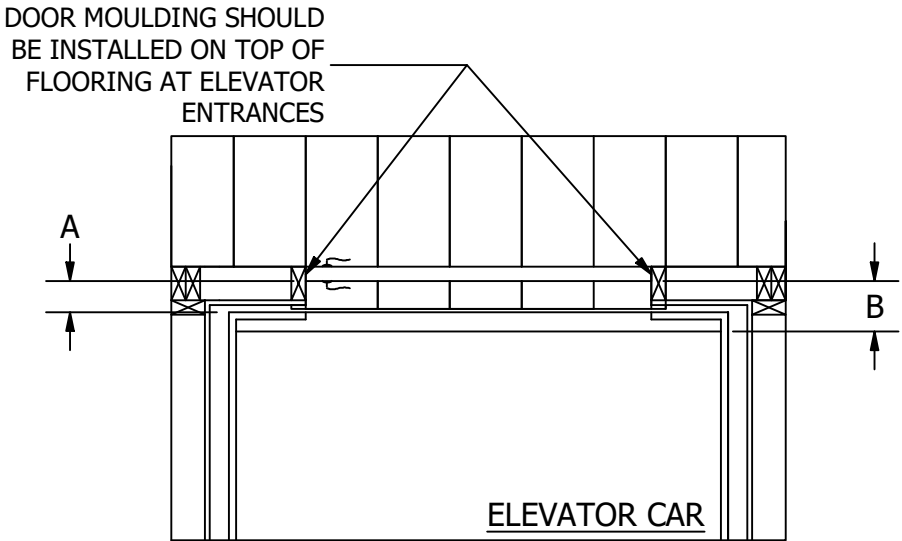
HYBRID ELEVATOR INC.
MANUFACTURERS OF:
ELEVATORS AND DISABILITY LIFTS

#16 - 634 LOUGHEED ROAD
KELOWNA, BC V1X 7R8
778-484-0064

PROPRIETARY AND CONFIDENTIAL

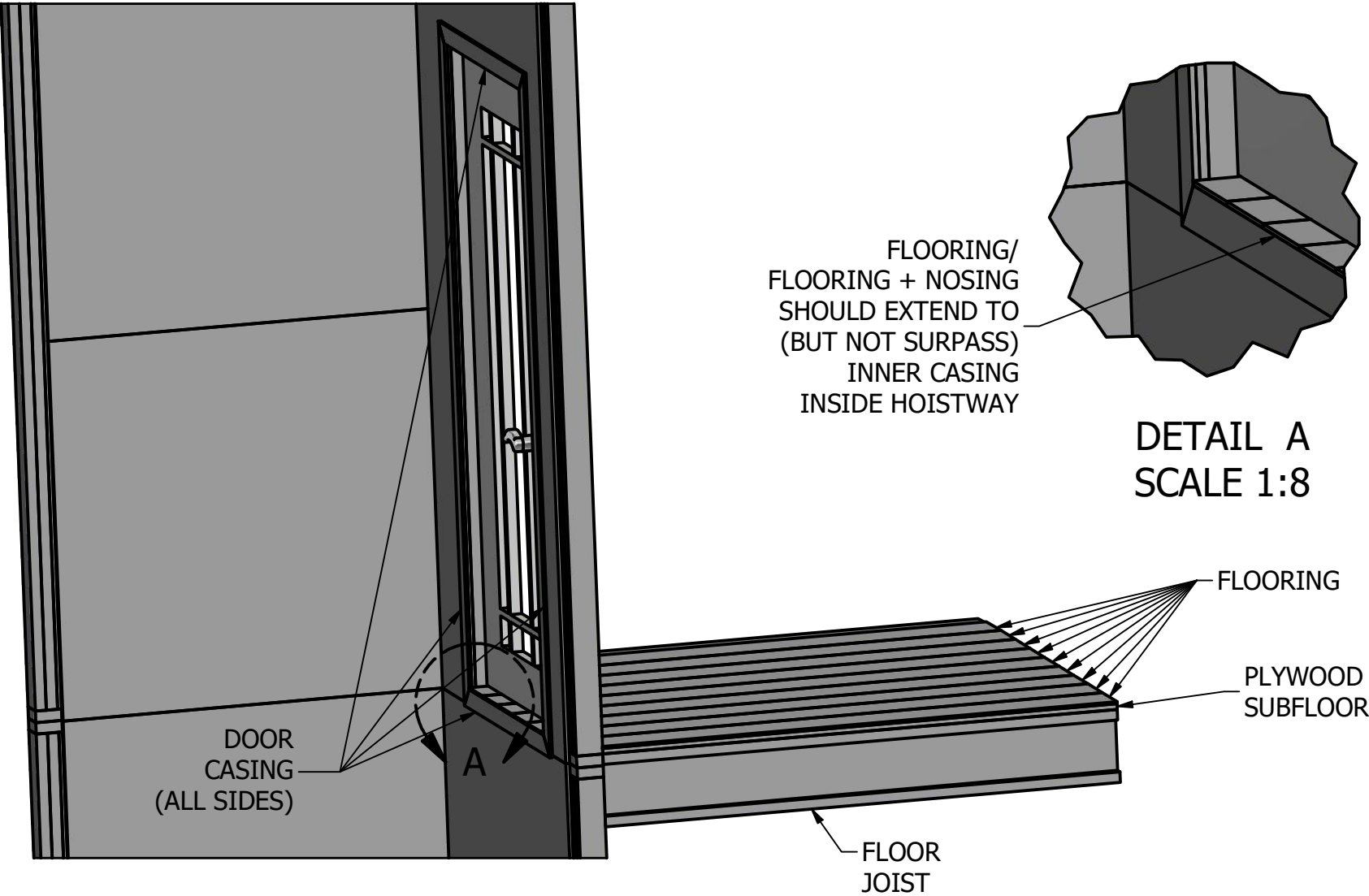
TITLE CONSTRUCTION DETAILS: HOISTWAY, ELECTRICAL PLACEMENT		SIZE B	DRAWING # HEI-CST-007	REV 0
SCALE NTS		SHEET 1 OF 1		

FLOORING & CLEARANCE DETAILS



3 x 5 ELEVATOR RULE

ELEVATOR DOORS MUST MEET THE 3 x 5 RULE:
MAX DISTANCE 3 IN./75mm BETWEEN INSIDE FACE OF
HOISTWAY DOOR AND ELEVATOR CAR [DIMENSION 'A'].
MAX DISTANCE 5 IN./125mm BETWEEN INSIDE FACE OF
HOISTWAY DOOR AND IR SAFETY SCREENS [DIMENSION 'B'].



FLOORING DETAIL

- NOTES:
- DOORS MUST BE IN LINE AND PLUMB TO EACH OTHER FLOOR TO FLOOR. MAXIMUM 1 IN. RUNNING CLEARANCE BETWEEN THE HOISTWAY WALLS AND THE ELEVATOR CAR.**
 - MAXIMUM INNER DOOR TRIM THICKNESS (OUTSIDE OF DRYWALL) IS 3/8 IN./10mm (BY CODE) FOR RUNNING CLEARANCE.
 - DOOR FRAMING MUST BE OF 2" x 4" CONSTRUCTION, OR DOOR MUST BE RECESSED, TO MEET ELEVATOR CODE.

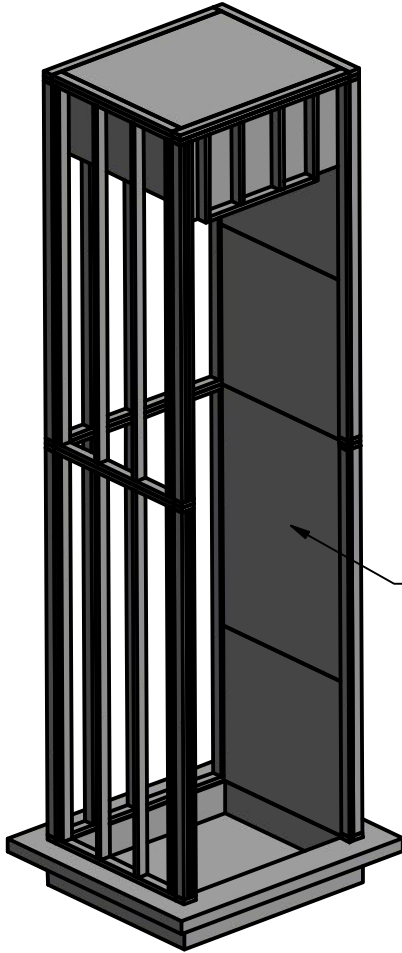
CONFIDENTIAL & PROPRIETARY
THIS DOCUMENT CONTAINS INFORMATION
PROPRIETARY TO HYBRID ELEVATOR INC.
USE OR DISCLOSURE WITHOUT WRITTEN
CONSENT OF HYBRID ELEVATOR IS
EXPRESSLY FORBIDDEN.

ALL DIMENSIONS IN INCHES			
DRAWN	CS	2019-09-16	TITLE CONSTRUCTION DETAILS: FLOORING CLEARANCES
APPROVED	HYBRID ELEVATOR	2019-09-16	
		SIZE B	DRAWING # HEI-CST-008
		SCALE NTS	REV 0
		SHEET 1 OF 1	



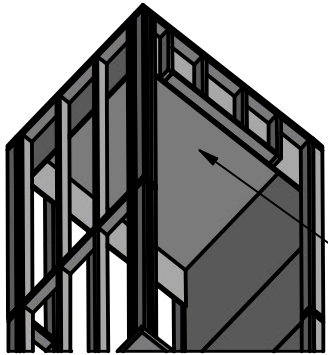
HYBRID ELEVATOR INC.
MANUFACTURERS OF:
ELEVATORS AND DISABILITY LIFTS
#16 - 634 LOUGHEED ROAD
KELOWNA, BC V1X 7R8
778-484-0064
PROPRIETARY AND CONFIDENTIAL

PRE-MECHANICAL INSTALLATION DETAILS



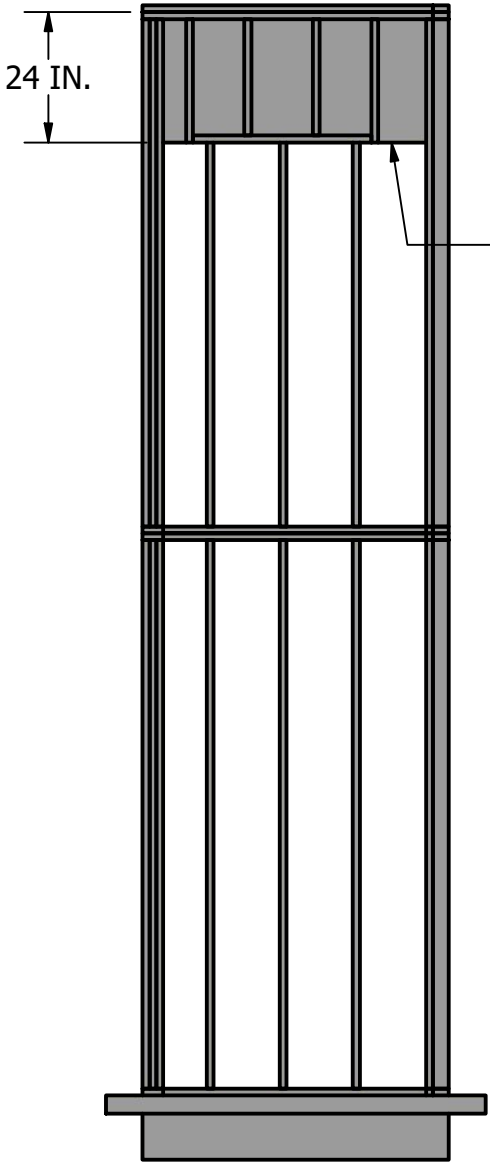
DRIVE WALL TO BE COMPLETELY SHEETED WITH 1/2 IN. PLYWOOD PRIOR TO MECHANICAL INSTALLATION

DRIVE WALL COVERAGE



CEILING TO BE SHEETED WITH PLYWOOD PRIOR TO MECHANICAL INSTALLATION

HOISTWAY CEILING COVERAGE

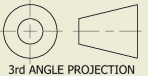



TOP 24 IN./1.2M OF WALLS ADJACENT TO AND OPPOSITE FROM DRIVE WALL (IF NOT DOORWAYS) TO BE SHEETED PRIOR TO MECHANICAL INSTALLATION

TOP WALL COVERAGE

- NOTES:
- THE FOLLOWING AREAS OF THE HOISTWAY **MUST** BE SHEETED BEFORE MECHANICAL INSTALLATION CAN OCCUR:
 - DRIVE WALL
 - CEILING
 - TOP 24 IN./1.2m OF WALLS ADJACENT TO DRIVE WALL, EXCLUDING DOORWAY
 - FOR ELECTRICAL COMPONENT LOCATIONS, PLEASE REFER TO DWG HEI-CST-007.

CONFIDENTIAL & PROPRIETARY
THIS DOCUMENT CONTAINS INFORMATION
PROPRIETARY TO HYBRID ELEVATOR INC.
USE OR DISCLOSURE WITHOUT WRITTEN
CONSENT OF HYBRID ELEVATOR IS
EXPRESSLY FORBIDDEN.

ALL DIMENSIONS IN INCHES	
DRAWN CS	2019-09-16
APPROVED HYBRID ELEVATOR	2019-09-16
	
3rd ANGLE PROJECTION	

 HYBRID ELEVATOR INC. MANUFACTURERS OF: ELEVATORS AND DISABILITY LIFTS #16 - 634 LOUGHEED ROAD KELOWNA, BC V1X 7R8 778-484-0064 PROPRIETARY AND CONFIDENTIAL			
TITLE CONSTRUCTION DETAILS: PRE-MECHANICAL INSTALLATION REQUIREMENTS			
SIZE B	DRAWING # HEI-CST-009		REV 0
SCALE NTS	SHEET 1 OF 1		